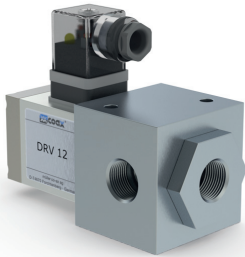


03/2022



⚠ Above stated body materials refer to the valve port connections that get in contact with the media only!

details needed

- orifice
- port
- function NC
- operating pressure
- inlet pressure at A, B or C
- flow rate
- media
- media temperature
- ambient temperature
- nominal voltage

⚠ The valves' technical design is based on media and application requirements. This can lead to deviations from the general specifications shown on the data sheet with regards to the design, sealing materials and characteristics.

⚠ If order or application specifications are incomplete or imprecise there exists a risk of an incorrect technical design of the valve for the required application. As a consequence, the physical and / or chemical properties of the materials or seals used, may not be suitable for the intended application. To avoid hydraulic shocks in pipelines, the flow velocities must be taken into account when designing valves for liquids.

specifications not highlighted are standard
 specifications highlighted in grey are optional

3/2 way valve

pressure range

orifice

connection

function

direct acting

low vacuum

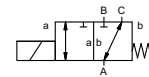
DN 12 mm

thread

valve

normally closed (A ► B)

symbol **NC**



operating principle

body material

pressure balanced, with spring return, intersecting switch-over

Ⓢ aluminium

valve seat

seal materials

synthetic materials on metal

NBR, CR

ports

function

pressure range

Kv value

vacuum

pressure-vacuum

back pressure

media

abrasive media

damping

flow direction

switching cycles

switching time

media temperature

ambient temperature

limit switches

manual override

approvals

mounting

weight

additional equipment

general specifications

DRV	threads G 1/2
	NC
bar	vacuum max. 98%
	A ⇔ B Δp max.1 / B ⇔ A Δp max.1 / A ⇔ C Δp max.1 / C ⇔ A Δp max.1
m ³ /h	2,7 / volume flow 11,0
leak rate	< 10 ⁻⁶ mbar•l•s ⁻¹
P ₁ ⇔ P ₂	pressure side max. 1bar, vacuum side leak rate <10 ⁻⁶ mbar•l•s ⁻¹
P ₂ > P ₁	gaseous
opening	
closing	see pressure range
1/min	300
ms	opening 40
	closing 25
°C	DC: -10 to +80
	AC: -10 to +80
°C	DC: -10 bis +80
	AC: -10 bis +80
	mounting holes
kg	1,0

options

upon request

electrical specifications

U _n	DC 24 V +5%/-10%	special voltage upon request
U _n	AC 230 V +5%/-10% 40-60 Hz	special voltage upon request
DC	direct-current magnet	
AC	direct-current magnet with integrated rectifier	
H	180°C	
IP65		
ED	100%	
	plug acc. DIN EN 175301-803 form A, 4 positions x90° / wire diameter 6-8 mm	
	illuminated plug with varistor	
N-coil	DC 24 V 1,30 A	
	AC 230 V 40-60 Hz 0,17 A	

options

insulating rating

protection

energized duty rating

connection

optional

additional equipment

current consumption

explosion proof

limit switches

function: **NC**
closed when not energized (A ► B)

