

05/2022



⚠ Above stated body materials refer to the valve port connections that get in contact with the media only!

details needed

- orifice
- port
- function NC/NO
- operating pressure
- flow rate
- media
- media temperature
- ambient temperature
- nominal voltage

⚠ The valves' technical design is based on media and application requirements. This can lead to deviations from the general specifications shown on the data sheet with regards to the design, sealing materials and characteristics.

⚠ If order or application specifications are incomplete or imprecise there exists a risk of an incorrect technical design of the valve for the required application. As a consequence, the physical and / or chemical properties of the materials or seals used, may not be suitable for the intended application. To avoid hydraulic shocks in pipelines, the flow velocities must be taken into account when designing valves for liquids.

specifications not highlighted are standard
 specifications highlighted in grey are optional

2/2-way valve

pressure range

orifice

connection

function

direct acting

PN 0-10 bar

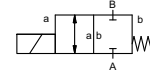
DN 20 mm

thread

valve

normally closed

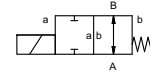
symbol **NC**



valve

normally open

symbol **NO**



operating principle

pressure balanced, with spring return

body material

① brass

② stainless steel

valve seat

synthetic materials on metal

seal materials

NBR

FPM

ports

RSV threads G 3/4 - G 1

function

NC

NO

pressure range

0-10

Kv value

m³/h 6,8

vacuum

low vacuum

pressure-vacuum

P₁ ↔ P₂

upon request

back pressure

P₂ > P₁

media

gaseous - liquid

abrasive media

damping

opening

closing

flow direction

A ↔ B as marked

switching cycles

1/min 140

switching time

ms opening 120
 closing 160

media temperature

°C DC: -10 to +80

AC: -10 to +80

ambient temperature

°C DC: -10 bis +80

AC: -10 bis +80

limit switches

manual override

upon request

approvals

mounting

mounting bracket / mounting holes

weight

kg 4,0

additional equipment

upon request

nominal voltage

U_n DC 24 V +5%/-10%

special voltage upon request

U_n AC 230 V +5%/-10% 40-60 Hz

special voltage upon request

actuation

DC direct-current magnet

AC direct-current magnet with integrated rectifier

insulating rating

H 180°C

protection

IP65

energized duty rating

ED 100%

connection

plug acc. DIN EN 175301-803 form A, 4 terminal box M16x1,5 positions x90° / wire diameter 6-8 mm

optional

additional equipment

illuminated plug with varistor

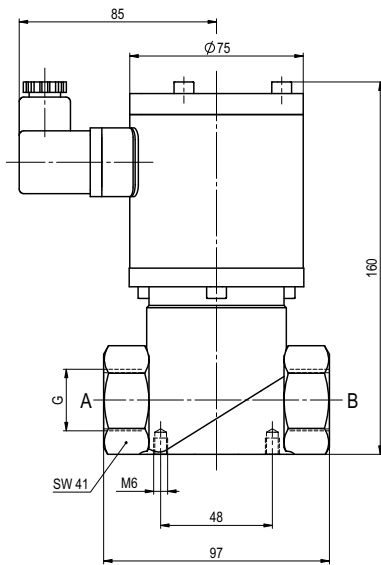
current consumption

N-coil DC 24 V 1,56 A
 AC 230 V 40-60 Hz 0,16 A

explosion proof

limit switches

function: **NC**
closed when not energized



function: **NO**
open when not energized

