

05/2022



⚠ Above stated body materials refer to the valve port connections that get in contact with the media only!

details needed

- orifice
- port
- function NC/NO
- operating pressure
- flow rate
- media
- media temperature
- ambient temperature
- nominal voltage

⚠ The valves' technical design is based on media and application requirements. This can lead to deviations from the general specifications shown on the data sheet with regards to the design, sealing materials and characteristics.

⚠ If order or application specifications are incomplete or imprecise there exists a risk of an incorrect technical design of the valve for the required application. As a consequence, the physical and / or chemical properties of the materials or seals used, may not be suitable for the intended application. To avoid hydraulic shocks in pipelines, the flow velocities must be taken into account when designing valves for liquids.

specifications not highlighted are standard
 specifications highlighted in grey are optional

2/2-way valve

pressure range

orifice

connection

function

direct acting

PN 0-10 bar

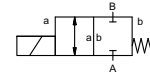
DN 25 mm

thread

valve

normally closed

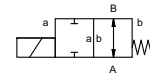
symbol **NC**



valve

normally open

symbol **NO**



operating principle

pressure balanced, with spring return

body material

① brass

② stainless steel

valve seat

synthetic materials on metal

seal materials

NBR

FPM

ports

RSV threads G 1 1/4

function

NC

NO

pressure range

0-10

Kv value

m³/h

7,5

vacuum

low vacuum

pressure-vacuum

P₁ ↔ P₂

upon request

back pressure

P₂ > P₁

media

gaseous - liquid

abrasive media

damping

opening

closing

A ↔ B as marked

1/min 130

ms

opening 130

closing 200

°C

DC: -10 to +80

AC: -10 to +80

°C

DC: -10 bis +80

AC: -10 bis +80

limit switches

manual override

approvals

mounting

weight

kg

4,2

additional equipment

mounting bracket / mounting holes

upon request

electrical specifications

options

U_n

DC 24 V +5%/-10%

special voltage upon request

U_n

AC 230 V +5%/-10% 40-60 Hz

special voltage upon request

DC

direct-current magnet

AC

direct-current magnet with integrated rectifier

H

180°C

IP65

ED

100%

plug acc. DIN EN 175301-803 form A, 4 terminal box M16x1,5 positions x90° / wire diameter 6-8 mm

insulating rating

protection

energized duty rating

connection

optional

additional equipment

current consumption

N-coil

DC 24 V 1,56 A

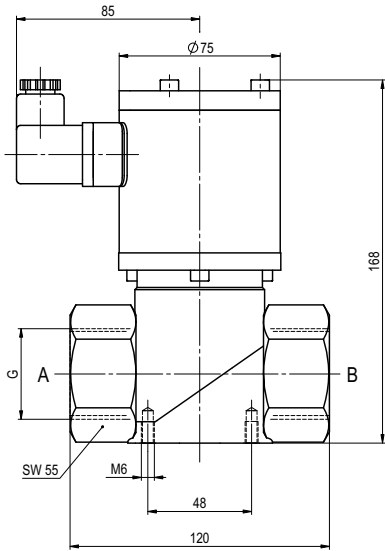
AC 230 V 40-60 Hz 0,16 A

illuminated plug with varistor

explosion proof

limit switches

function: **NC**
closed when not energized



function: **NO**
open when not energized

