

05/2022



**⚠** Above stated body materials refer to the valve port connections that get in contact with the media only!

**details needed**

- orifice
- port
- function NC/NO
- operating pressure
- flow rate
- media
- media temperature
- ambient temperature
- nominal voltage

**⚠** The valves' technical design is based on media and application requirements. This can lead to deviations from the general specifications shown on the data sheet with regards to the design, sealing materials and characteristics.

**⚠** If order or application specifications are incomplete or imprecise there exists a risk of an incorrect technical design of the valve for the required application. As a consequence, the physical and / or chemical properties of the materials or seals used, may not be suitable for the intended application. To avoid hydraulic shocks in pipelines, the flow velocities must be taken into account when designing valves for liquids.

specifications not highlighted are standard  
 specifications highlighted in grey are optional

**2/2-way valve**

**pressure range**

**orifice**

**connection**

**function**

**direct acting**

PN 0-10 bar

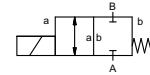
DN 32 mm

thread

valve

normally closed

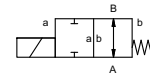
symbol **NC**



valve

normally open

symbol **NO**



pressure balanced, with spring return

**operating principle**

**body material**

① brass

② stainless steel

**valve seat**

synthetic materials on metal

**seal materials**

NBR

FPM

**ports**

RSV threads G 1 1/4 - G 1 1/2

**function**

NC

NO

**pressure range**

0-10

**Kv value**

m³/h

8,2

**vacuum**

low vacuum

**pressure-vacuum**

P<sub>1</sub> ↔ P<sub>2</sub>

upon request

**back pressure**

P<sub>2</sub> > P<sub>1</sub>

**media**

gaseous - liquid

**abrasive media**

**damping**

opening

closing

A ↔ B as marked

1/min 110

ms

opening 140

closing 250

°C

DC: -10 to +80

AC: -10 to +80

°C

DC: -10 bis +80

AC: -10 bis +80

**ambient temperature**

**limit switches**

**manual override**

**approvals**

**mounting**

**weight**

**additional equipment**

kg

4,5

mounting bracket / mounting holes

upon request

**electrical specifications**

U<sub>n</sub>

DC 24 V +5%/-10%

special voltage upon request

U<sub>n</sub>

AC 230 V +5%/-10% 40-60 Hz

special voltage upon request

DC

direct-current magnet

AC

direct-current magnet with integrated rectifier

**insulating rating**

H

180°C

**protection**

IP65

**energized duty rating**

ED

100%

**connection**

plug acc. DIN EN 175301-803 form A, 4 terminal box M16x1,5 positions x90° / wire diameter 6-8 mm

**optional**

**additional equipment**

**current consumption**

N-coil

illuminated plug with varistor

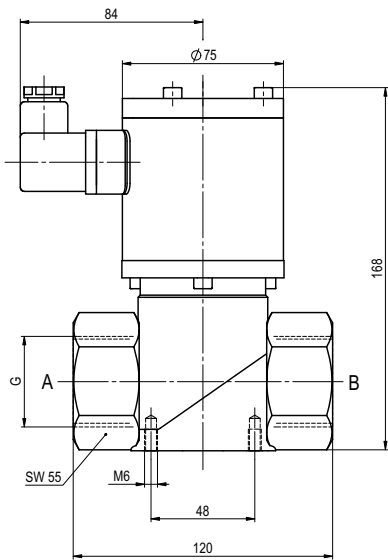
DC 24 V 1,56 A

AC 230 V 40-60 Hz 0,16 A

**explosion proof**

**limit switches**

function: **NC**  
closed when not energized



function: **NO**  
open when not energized

