

# coax® data sheet - lateral valve

type RSV 40



05/2022



**⚠** Above stated body materials refer to the valve port connections that get in contact with the media only!

## details needed

- orifice
- port
- function NC/NO
- operating pressure
- flow rate
- media
- media temperature
- ambient temperature
- nominal voltage

**⚠** The valves' technical design is based on media and application requirements. This can lead to deviations from the general specifications shown on the data sheet with regards to the design, sealing materials and characteristics.

**⚠** If order or application specifications are incomplete or imprecise there exists a risk of an incorrect technical design of the valve for the required application. As a consequence, the physical and / or chemical properties of the materials or seals used, may not be suitable for the intended application. To avoid hydraulic shocks in pipelines, the flow velocities must be taken into account when designing valves for liquids.

## 2/2-way valve

### pressure range

### orifice

### connection

### function

## operating principle

### body material

### valve seat

### seal materials

### ports

### function

### pressure range

### Kv value

### vacuum

### pressure-vacuum

### back pressure

### media

### abrasive media

### damping

### flow direction

### switching cycles

### switching time

### media temperature

### ambient temperature

### limit switches

### manual override

### approvals

### mounting

### weight

### additional equipment

### nominal voltage

### actuation

### insulating rating

### protection

### energized duty rating

### connection

### optional

### additional equipment

### current consumption

### explosion proof

### limit switches

## direct acting

### PN 0-10 bar

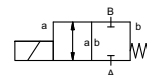
### DN 40 mm

### thread

### valve

### normally closed

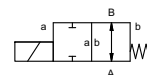
### symbol **NC**



### valve

### normally open

### symbol **NO**



### pressure balanced, with spring return

### ① brass

### ④ stainless steel

### synthetic materials on metal

### NBR

### FPM

## general specifications

### RSV threads G 1 1/2

### NC

### NO

### bar 0-10

### m³/h 14,0

### low vacuum

### P<sub>1</sub> ⇄ P<sub>2</sub>

### upon request

### P<sub>2</sub> > P<sub>1</sub>

### gaseous - liquid

### opening

### closing

### A ⇄ B as marked

### 1/min 70

### ms

### opening 150

### closing 250

### °C

### DC: -10 to +80

### AC: -10 to +80

### °C

### DC: -10 bis +80

### AC: -10 bis +80

### mounting bracket / mounting holes

### kg 8,4

### upon request

## electrical specifications

### U<sub>n</sub> DC 24 V +5%/-10%

### special voltage upon request

### U<sub>n</sub> AC 230 V +5%/-10% 40-60 Hz

### special voltage upon request

### DC direct-current magnet

### AC direct-current magnet with integrated rectifier

### H 180°C

### IP65

### ED 100%

### plug acc. DIN EN 175301-803 form A, 4 terminal box M16x1,5 positions x90° / wire diameter 6-8 mm

### illuminated plug with varistor

### N-coil DC 24 V 1,79 A

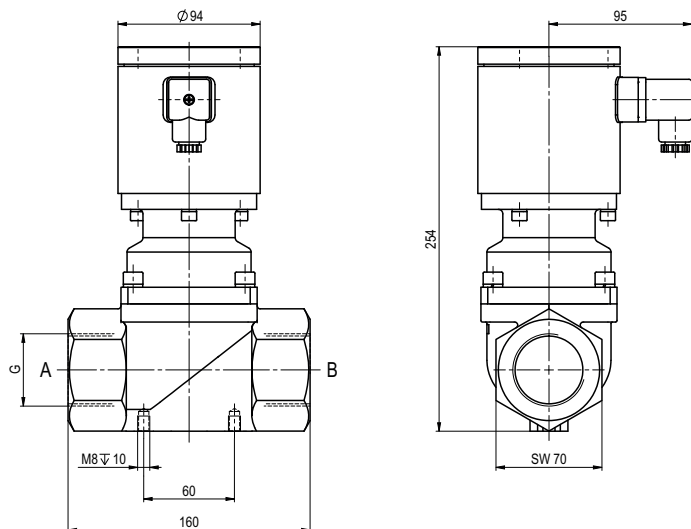
### AC 230 V 40-60 Hz 0,36 A

■ specifications not highlighted are standard  
■ specifications highlighted in grey are optional

# coax® data sheet - lateral valve

type RSV 40

function: **NC**  
closed when not energized



function: **NO**  
open when not energized

