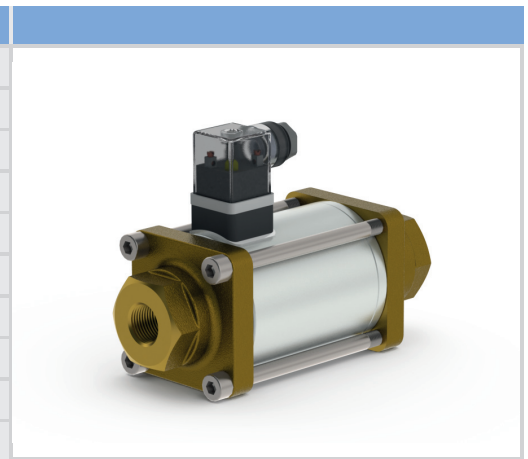


nominal specifications	
2/2-way coaxial valve	direct acting
pressure range	0-40 bar / 0-600 psi
connection	thread
function	NC - normally closed
	NO - normally open
design	pressure balanced, with spring return
body materials parts in contact with media	brass, stainless steel
seal materials seat / dynamic / static	FPM / PTFE / FPM customer to verify seal / seat compatibility with media
media	gaseous - liquid - highly viscous - gelatinous - contaminated
electrical connection	PG 9, plug acc. DIN EN 175301-803 form A, LED



technical data	CXD 10	CXD 15	CXD 20	CXD 25
orifice	DN 10	DN 15	DN 20	DN 25
threads	G 3/8 / FNPT 3/8	G 1/2 / FNPT 1/2	G 3/4 / FNPT 3/4	G 1 / FNPT 1
Kv-value A → B	2,2 m³/h	5,2 m³/h	7,5 m³/h	12,2 m³/h
media temperature	-20 °C to +100 °C	-20 °C to +100 °C	-20 °C to +100 °C	-20 °C to +100 °C
ambient temperature	-20 °C to +60 °C	-20 °C to +60 °C	-20 °C to +60 °C	-20 °C to +60 °C
switching time opening / closing	45 ms / 70 ms	60 ms / 130 ms	105 ms / 150 ms	150 ms / 190 ms
vacuum leak rate	< 10 <sup>-4</sup> mbar•l•s <sup>-1</sup>	< 10 <sup>-4</sup> mbar•l•s <sup>-1</sup>	< 10 <sup>-4</sup> mbar•l•s <sup>-1</sup>	< 10 <sup>-4</sup> mbar•l•s <sup>-1</sup>
flow direction	A → B B → A (Δp 12 bar max.)	A → B B → A (Δp 12 bar max.)	A → B B → A (Δp 12 bar max.)	A → B B → A (Δp 12 bar max.)
nominal voltage	DC 24 V AC 110 V / AC 230 V	DC 24 V AC 110 V / AC 230 V	DC 24 V AC 110 V / AC 230 V	DC 24 V AC 110 V / AC 230 V
current consumption	DC 1,45 A AC 0,36 A / AC 0,18 A	DC 2,1 A AC 0,41 A / AC 0,24 A	DC 2,2 A AC 0,56 A / AC 0,26 A	DC 2,5 A AC 0,62 A / AC 0,3 A
insulating rating	H	H	H	H
protection	IP 65	IP 65	IP 65	IP 65
energized duty rating	ED 100%	ED 100%	ED 100%	ED 100%
length L1 / L2	145 mm / 50 mm	173 mm / 70 mm	193 mm / 80 mm	212 mm / 90 mm
length L3 / L4	- / -	- / -	- / -	- / -
weight	1,7 kg / 3,75 lb	3,7 kg / 8,16 lb	5,4 kg / 11,90 lb	7,1 kg / 15,65 lb

accessories optional	order-codes			
mounting brackets stainless steel	1 3 4 5 7 5	1 3 4 5 7 6	1 3 4 5 7 7	1 3 4 5 7 8

drawings	circuit symbols	valve order-code
	<p>function: NC closed when not energized</p> <p>function: NO open when not energized</p>	<p>9 1</p> <p>NC = 1 NO = 2</p> <p>DN 10 G 3/8 = 1 DN 10 FNPT 3/8 = 5 DN 15 G 1/2 = 2 DN 15 FNPT 1/2 = 6 DN 20 G 3/4 = 3 DN 20 FNPT 3/4 = 7 DN 25 G 1 = 4 DN 25 FNPT 1 = 8</p> <p>brass = 1 stainless steel = 2</p>