

08/2021



⚠ Above stated body materials refer to the valve port connections that get in contact with the media only!

details needed

- orifice
- port
- function NC
- operating pressure
- inlet pressure at A, B or C
- flow rate
- media
- media temperature
- ambient temperature
- nominal voltage

⚠ The valves' technical design is based on media and application requirements. This can lead to deviations from the general specifications shown on the data sheet with regards to the design, sealing materials and characteristics.

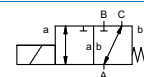
⚠ If order or application specifications are incomplete or imprecise there exists a risk of an incorrect technical design of the valve for the required application. As a consequence, the physical and / or chemical properties of the materials or seals used, may not be suitable for the intended application.

3/2 way valve

pressure range
orifice
connection
function

direct acting

low vacuum
 DN 12 mm
 thread
 valve normally closed (A ► B)
 symbol **NC**



design

body materials

pressure balanced, with spring return, intersecting switch-over

Ⓞ aluminium

valve seat

seal materials

synthetic resin on metal

NBR, CR

general specifications

options

ports
function
pressure range
Kv value
vacuum
pressure-vacuum
back pressure
media
abrasive media
damping
flow direction
switching cycles
switching time
media temperature
ambient temperature
limit switches
manual override
approvals
mounting
weight
additional equipment

DRV threads G 1/2
 NC
 bar vacuum max. 98%
 $A \Rightarrow B \Delta p \max.1 / B \Rightarrow A \Delta p \max.1 / A \Rightarrow C \Delta p \max.1 / C \Rightarrow A \Delta p \max.1$
 m^3/h 2,7 / volume flow 11,0
 leak rate $< 10^{-6} \text{ mbar} \cdot \text{L} \cdot \text{s}^{-1}$
 $P_1 \Leftrightarrow P_2$ pressure side max. 1bar, vacuum side leak rate $< 10^{-6} \text{ mbar} \cdot \text{L} \cdot \text{s}^{-1}$
 $P_2 > P_1$ gaseous
 opening
 closing see pressure range
 1/min 300
 ms opening 40
 closing 25
 °C DC: -10 to +80
 AC: -10 to +80
 °C DC: -10 bis +80
 AC: -10 bis +80
 mounting holes
 kg 1,0
 upon request

electrical specifications

options

nominal voltage
actuation
insulating rating
protection
energized duty rating
connection
optional
additional equipment
current consumption
explosion proof
limit switches

U_n DC 24 V +5%/-10% special voltage upon request
 U_n AC 230 V +5%/-10% 40-60 Hz special voltage upon request
 DC direct-current magnet
 AC direct-current magnet with integrated rectifier
 H 180°C
 IP65
 ED 100%
 plug acc. DIN EN 175301-803 form A, 4 positions x90° / wire diameter 6-8 mm
 illuminated plug with varistor
 N-coil DC 24 V 1,33 A
 AC 230 V 40-60 Hz 0,17 A

■ specifications not highlighted are standard
 ■ specifications highlighted in grey are optional

function: **NC**
closed when not energized (A ► B)

