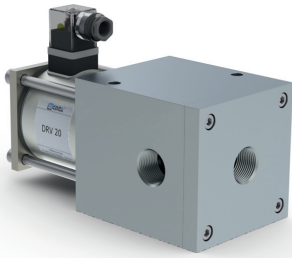


08/2021



⚠ Above stated body materials refer to the valve port connections that get in contact with the media only!

details needed

- orifice
- port
- function NC
- operating pressure
- inlet pressure at A, B or C
- flow rate
- media
- media temperature
- ambient temperature
- nominal voltage

⚠ The valves' technical design is based on media and application requirements. This can lead to deviations from the general specifications shown on the data sheet with regards to the design, sealing materials and characteristics.

⚠ If order or application specifications are incomplete or imprecise there exists a risk of an incorrect technical design of the valve for the required application. As a consequence, the physical and / or chemical properties of the materials or seals used, may not be suitable for the intended application.

3/2 way valve

pressure range

orifice

connection

function

direct acting

low vacuum

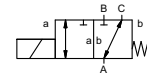
DN 20 mm

thread

valve

normally closed (A ► B)

symbol **NC**



design

body materials

pressure balanced, with spring return, intersecting switch-over

Ⓞ aluminium

valve seat

seal materials

synthetic resin on metal

NBR, CR

general specifications

options

ports

function

pressure range

Kv value

vacuum

pressure-vacuum

back pressure

media

abrasive media

damping

flow direction

switching cycles

switching time

media temperature

ambient temperature

limit switches

manual override

approvals

mounting

weight

additional equipment

DRV

threads G 3/4

bar

vacuum max. 98%

A ⇒ B Δp max.2 / B ⇒ A Δp max.2 / A ⇒ C Δp max.2 / C ⇒ A Δp max.2

m³/h

9,1

leak rate

< 10⁻⁶ mbar•l•s⁻¹

P₁ ⇔ P₂

pressure side max. 1bar, vacuum side leak rate <10⁻⁶ mbar•l•s⁻¹

P₂ > P₁

gaseous

opening

closing

see pressure range

1/min

70

ms

opening 160

closing 100

°C

DC: -10 to +80

AC: -10 to +80

°C

DC: -10 bis +80

AC: -10 bis +80

mounting holes

kg

5,6

upon request

electrical specifications

options

nominal voltage

actuation

insulating rating

protection

energized duty rating

connection

optional

additional equipment

current consumption

explosion proof

limit switches

U_n

DC 24 V +5%/-10%

U_n

AC 230 V +5%/-10% 40-60 Hz

DC

direct-current magnet

AC

direct-current magnet with integrated rectifier

H

180°C

IP65

ED

100%

plug acc. DIN EN 175301-803 form A, 4 positions x90° / wire diameter 6-8 mm

illuminated plug with varistor

N-coil

DC 24 V 1,70 A

AC 230 V 40-60 Hz 0,16 A

■ specifications not highlighted are standard
 ■ specifications highlighted in grey are optional

function: **NC**
closed when not energized (A ► B)

