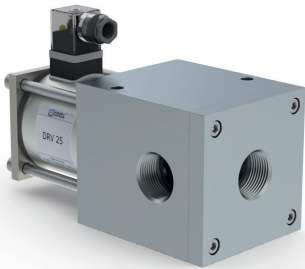


08/2021



**⚠** Above stated body materials refer to the valve port connections that get in contact with the media only!

**details needed**

- orifice
- port
- function NC
- operating pressure
- inlet pressure at A, B or C
- flow rate
- media
- media temperature
- ambient temperature
- nominal voltage

**⚠** The valves' technical design is based on media and application requirements. This can lead to deviations from the general specifications shown on the data sheet with regards to the design, sealing materials and characteristics.

**⚠** If order or application specifications are incomplete or imprecise there exists a risk of an incorrect technical design of the valve for the required application. As a consequence, the physical and / or chemical properties of the materials or seals used, may not be suitable for the intended application.

**3/2 way valve**

**pressure range**

**orifice**

**connection**

**function**

**direct acting**

low vacuum

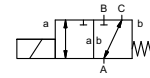
DN 25 mm

thread

valve

normally closed (A ► B)

symbol **NC**



**design**

**body materials**

pressure balanced, with spring return, intersecting switch-over

Ⓢ aluminium

**valve seat**

synthetic resin on metal

**seal materials**

NBR, CR

**ports**

DRV threads G 1

**function**

NC

**pressure range**

bar vacuum max. 98%

A ⇒ B Δp max.2 / B ⇒ A Δp max.2 / A ⇒ C Δp max.2 / C ⇒ A Δp max.2

**Kv value**

m<sup>3</sup>/h 12,8

**vacuum**

leak rate < 10<sup>-6</sup> mbar•L•s<sup>-1</sup>

**pressure-vacuum**

P<sub>1</sub> ⇔ P<sub>2</sub> pressure side max. 1bar, vacuum side leak rate <10<sup>-6</sup> mbar•L•s<sup>-1</sup>

**back pressure**

P<sub>2</sub> > P<sub>1</sub>

**media**

gaseous

**abrasive media**

damping

**flow direction**

opening see pressure range

**switching cycles**

closing 1/min 70

**switching time**

ms opening 160  
closing 100

**media temperature**

°C DC: -10 to +80

**ambient temperature**

°C AC: -10 to +80  
DC: -10 bis +80  
AC: -10 bis +80

**limit switches**

**manual override**

**approvals**

**mounting**

mounting holes

**weight**

kg 5,4

**additional equipment**

upon request

**electrical specifications**

**options**

U<sub>n</sub> DC 24 V +5%/-10%

special voltage upon request

U<sub>n</sub> AC 230 V +5%/-10% 40-60 Hz

special voltage upon request

DC direct-current magnet

AC direct-current magnet with integrated rectifier

H 180°C

IP65

ED 100%

plug acc. DIN EN 175301-803 form A, 4 positions x90° / wire diameter 6-8 mm

illuminated plug with varistor

N-coil DC 24 V 1,70 A

AC 230 V 40-60 Hz 0,16 A

**insulating rating**

**protection**

**energized duty rating**

**connection**

**optional**

**additional equipment**

**current consumption**

**explosion proof**

**limit switches**

■ specifications not highlighted are standard  
■ specifications highlighted in grey are optional

function: **NC**  
closed when not energized (A ► B)

