

08/2021



! Above stated body materials refer to the valve port connections that get in contact with the media only!

details needed

- orifice
- port
- function NC/NO
- operating pressure
- inlet pressure at A, B or C
- flow rate
- media
- media temperature
- ambient temperature
- nominal voltage

! The valves' technical design is based on media and application requirements. This can lead to deviations from the general specifications shown on the data sheet with regards to the design, sealing materials and characteristics.

! If order or application specifications are incomplete or imprecise there exists a risk of an incorrect technical design of the valve for the required application. As a consequence, the physical and / or chemical properties of the materials or seals used, may not be suitable for the intended application.

3/2 way valve

pressure range

orifice

connection

function

direct acting

PN 0-150 bar

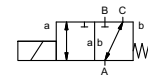
DN 10 mm

thread

valve

normally closed (A ► B)

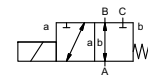
symbol **NC**



valve

normally open (A ► B)

symbol **NO**



design

body materials

pressure balanced, with spring return, intersecting switch-over

- ① brass
- ②
- ③
- ④
- ⑤
- ⑥ stainless steel

valve seat

synthetic resin on metal

seal materials

NBR PTFE, FPM, CR, EPDM

ports

ECD-H threads G 3/8

function

NC

pressure range

0-150

Kv value

m³/h 1,5

vacuum

leak rate < 10⁻⁶ mbar•L•s⁻¹

pressure-vacuum

P₁ ↔ P₂

back pressure

P₂ > P₁

media

gaseous - liquid

abrasive media

damping

opening

closing

flow direction

switching cycles

switching time

1/min 100

ms opening 250

closing 100

media temperature

°C DC: -20 to +100 -20 to +160

AC: -20 to +100 -20 to +160

ambient temperature

°C DC: -20 to +60

AC: -20 to +60

limit switches

manual override

approvals

mounting

weight

kg 6,0

additional equipment

electrical specifications

U_n DC 24 V +5%/-10%

U_n AC 230 V +5%/-10% 40-60 Hz

DC direct-current magnet

AC direct-current magnet with integrated rectifier

options

special voltage upon request

special voltage upon request

above 100 °C with separate rectifier

nominal voltage

actuation

insulating rating

H 180°C

protection

IP65

energized duty rating

ED 100%

connection

plug acc. DIN EN 175301-803 form A, 4 terminal box M16x1,5 positions x90° / wire diameter 6-8 mm

optional

additional equipment

current consumption

illuminated plug with varistor

DC 24 V 2,64 A

AC 230 V 40-60 Hz 0,30 A

explosion proof

limit switches

inductive (I)

inductive (B)

normally open-PNP

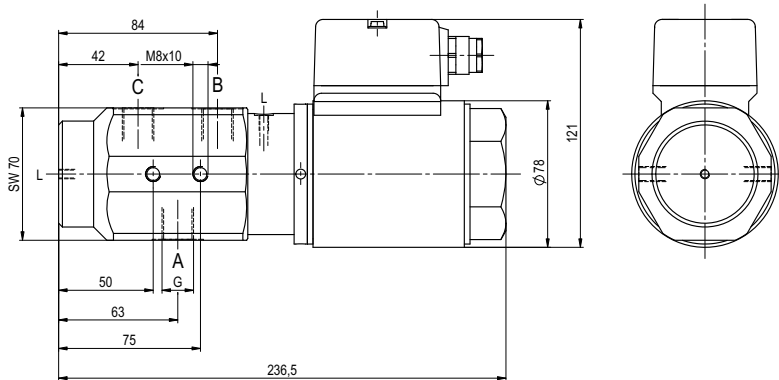
normally open-PNP

■ specifications not highlighted are standard
 ■ specifications highlighted in grey are optional

coax® data sheet - lateral valve

type ECD-H 10 DR

function: **NC**
closed when not energized (A ► B)



function: **NO**
open when not energized (A ► B)

