

08/2021



**!** Above stated body materials refer to the valve port connections that get in contact with the media only!

**details needed for main valve**

- orifice
- port
- function NC
- operating pressure
- flow rate
- media
- media temperature
- ambient temperature
- type of actuation

**details needed for pneumatic actuation**

- nominal voltage
- type of protection
- actuation pressure range min/max
- pilot valve type

**details needed for hydraulic actuation**

- actuation pressure range min/max
- hydraulic control valve function

**!** The valves' technical design is based on media and application requirements. This can lead to deviations from the general specifications shown on the data sheet with regards to the design, sealing materials and characteristics.

**!** If order or application specifications are incomplete or imprecise there exists a risk of an incorrect technical design of the valve for the required application. As a consequence, the physical and / or chemical properties of the materials or seals used, may not be suitable for the intended application.

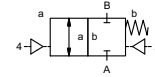
■ specifications not highlighted are standard  
 ■ specifications highlighted in grey are optional

**2/2-way valve**

**pressure range**  
**orifice**  
**connection**  
**function**

**externally controlled**

PN 0-40 bar  
 DN 65 mm  
 flange  
 valve  
 normally closed  
 symbol **NC**



**design**

**body materials**

pressure balanced, with spring return

- |             |   |
|-------------|---|
| ① aluminium | ② |
| ③           | ⑤ |
| ④           | ⑥ |

**valve seat**

**seal materials**

synthetic resin on metal  
 NBR, PU PTFE, FPM, PE

**ports**

**function**  
**pressure range**

FCF-K flanges PN 16 / 40  
 NC  
 bar 0-16 / 0-40

**Kv value**  
**vacuum**  
**pressure-vacuum**

m<sup>3</sup>/h 98,0  
 leak rate < 10<sup>-4</sup> mbar•L•s<sup>-1</sup>  
 P<sub>1</sub> ⇄ P<sub>2</sub> pressure side max. 40 bar  
vacuum side leak rate upon request  
available (max. 16 bar)  
other medias upon request

**back pressure**  
**media**

P<sub>2</sub> > P<sub>1</sub> emulsion - oil - neutral gases

**abrasive media**  
**damping**

opening  
 closing by throttles on pilot valve  
 A ⇄ B as marked bi-directional upon request

**flow direction**  
**switching cycles**  
**switching time**

1/min 50  
 ms opening 250-3000  
closing 400-3000  
 °C direct mounted pilot valve 60 > 60 °C upon request  
 °C direct mounted pilot valve 50 > 50 °C upon request

**media temperature**  
**ambient temperature**  
**flush ports**

via pilot valve upon request

**leak ports**  
**limit switches**  
**manual override**

**approvals**  
**mounting**  
**weight**  
**additional equipment**

kg FCF-K 9,2  
sensor / manometer connection G 1/4

**nominal voltage**

**power consumption**

**protection**  
**energized duty rating**  
**connection**  
**optional**  
**additional equipment**  
**max. temperature**

**electrical specifications** **options**  
 U<sub>n</sub> DC 24 V special voltage upon request  
 U<sub>n</sub> AC 230 V 50 Hz special voltage upon request  
 DC 4,8 W  
 AC pick up 11,0 VA holding 8,5 VA

**explosion proof**

IP65 (P54) acc. DIN 40050  
 ED 100%  
plug acc. DIN EN 175301-803 form B, 4 positions x90° / wire diameter 6-8 mm  
 M12x1 connector acc. DESINA connector acc. VDMA  
illuminated plug with varistor  
 media 60°C  
 ambient 50°C  
 E Ex e II T5 nominal voltage U<sub>n</sub> DC 24 V 3,25 W  
power consumption AC 230 V 50 Hz 2,90 W

**actuation pressure range**  
**air consumption**  
**cycle speed**  
**control**  
**pilot valve interface**  
**actuator ports**

**pneumatic specifications** **options**  
 bar 4-10 3-10 upon request  
 cm<sup>3</sup>/stroke 77  
main valve speed variable by throttles on pilot valve  
preferably 5/2 way pilot valve  
NAMUR acc. VDI / VDE 3845 ISO 1 acc. DIN 5599/1  
 2/4 G 1/4 G 3/8

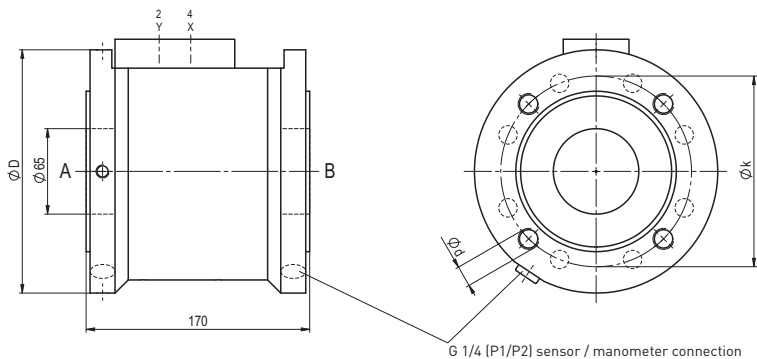
**actuation pressure range**  
**control**  
**actuator ports**  
**by media**

**hydraulic specifications** **options**  
 bar 30-60  
preferably 4/2 way control valve  
 X/Y G 1/4 NPT 1/4

# coax® data sheet - coaxial valve

type FCF-K 65

function: **NC**  
closed when not energized



flanges PN	DIN	ØD	Øk	Ød
16	EN 1092-1	185	145	4x M16
40	EN 1092-1	185	145	8x M16

### pneumatic specifications

