

08/2021



**⚠** Above stated body materials refer to the valve port connections that get in contact with the media only!

**details needed for main valve**

- orifice
- port
- pressure regulating range
- flow rate
- media
- media temperature
- ambient temperature

**details needed for pneumatic actuation**

- nominal voltage
- type of protection
- actuation pressure range min/max

**⚠** The valves' technical design is based on media and application requirements. This can lead to deviations from the general specifications shown on the data sheet with regards to the design, sealing materials and characteristics.

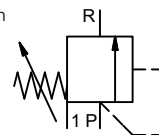
**⚠** If order or application specifications are incomplete or imprecise there exists a risk of an incorrect technical design of the valve for the required application. As a consequence, the physical and / or chemical properties of the materials or seals used, may not be suitable for the intended application.

**control valve manual**

**pressure range**  
**orifice**  
**connection**  
**function**

**externally controlled**

PN 0-200 bar  
 DN 8 mm  
 thread  
 stepless pressure regulation



**design**

**body materials**

externally controlled without spring return

- ② steel galvanized
- ① brass
- ③
- ④
- ⑤
- ⑥

**valve seat**

**seal materials**

metal on metal      synthetic resin on metal  
 NBR      FPM

**ports**

**function**  
**pressure regulation range**  
**flow rate**  
**media**

**general specifications**

HPB      threads G 3/8  
 stepless pressure regulation  
 bar      10-200  
 m³/h      max. 1,1  
 gaseous - liquid

**options**

10-160

**abrasive media**

**flow direction**

**settling time**

**media temperature**

**ambient temperature**

**approvals**

**mounting**

**weight**

**additional equipment**

P ⇌ R      as marked  
 ms      < 200  
 °C      0 to +60  
 °C      0 to +50

kg      3,6

**electrical specifications**

U<sub>n</sub>      DC 24 V  
 U<sub>n</sub>      AC 230 V 50 Hz  
 DC      4,8 W  
 AC      pick up 11,0 VA holding 8,5 VA  
 IP65 (P54)      acc. DIN 40050  
 ED      100%  
 plug acc. DIN EN 175301-803 form B, 3 positions x90° / wire diameter 6-8 mm  
 M12x1      connector acc. DESINA  
 media      illuminated plug with varistor  
 ambient      60°C  
 50°C  
 E Ex e II T5      nominal voltage U<sub>n</sub>  
 power consumption

**options**

special voltage upon request  
 special voltage upon request  
 2,5 W

connector acc. VDMA

DC 24 V      3,25 W  
 AC 230 V 50 Hz      2,90 W

**pneumatic specifications**

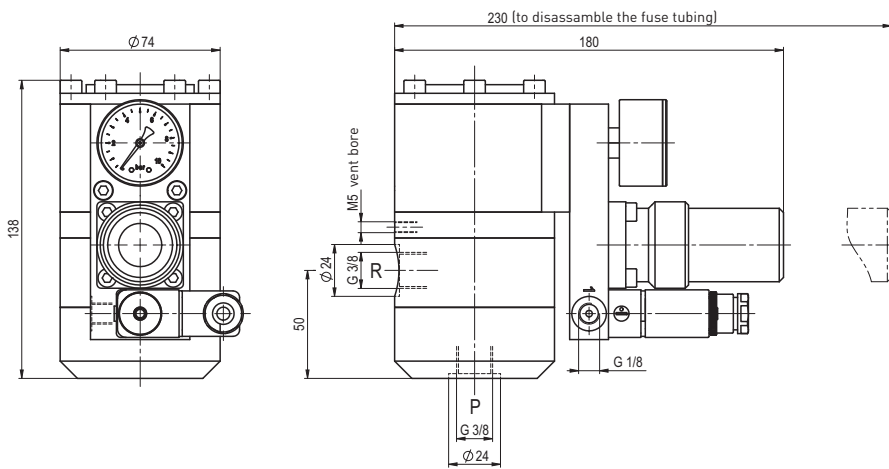
bar      see actuation pressure-diagram  
 DIN ISO 8573-1 grade of compressed air quality 5/4/3  
 preferably 3/2 way pilot valve during low pressure circulation mode  
 1      G 1/8

**options**

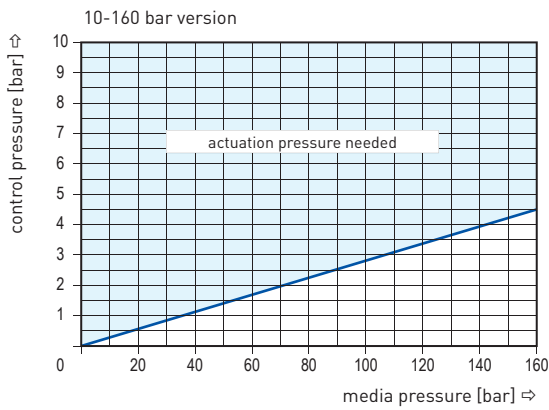
■ specifications not highlighted are standard  
 ■ specifications highlighted in grey are optional

# coax® data sheet - pressure limitation valve

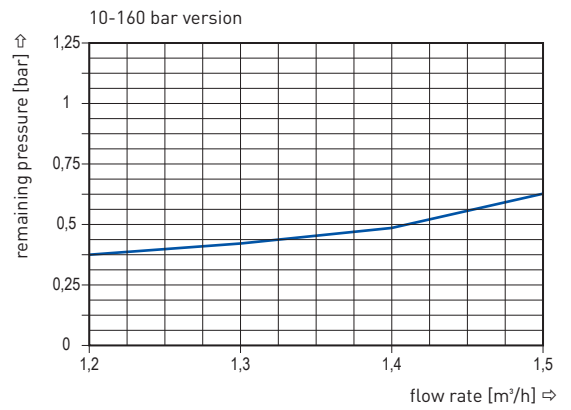
type HPB 08



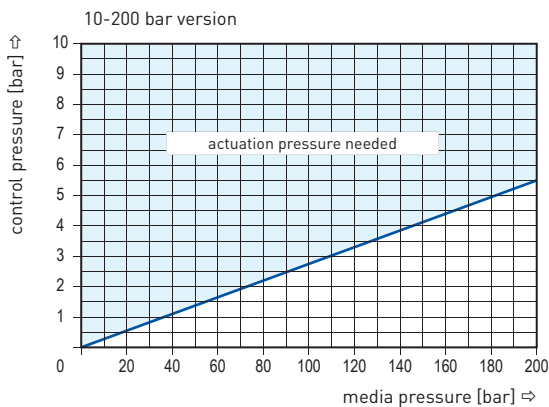
**actuation pressure-diagram**



**pressureless circulation mode**



**actuation pressure-diagram**



**pressureless circulation mode**

