

08/2021



⚠ Above stated body materials refer to the valve port connections that get in contact with the media only!

details needed for main valve

- orifice
- port
- pressure regulating range
- flow rate
- media
- media temperature
- ambient temperature

details needed for pneumatic actuation

- nominal voltage
- type of protection
- actuation pressure range min/max

⚠ The valves' technical design is based on media and application requirements. This can lead to deviations from the general specifications shown on the data sheet with regards to the design, sealing materials and characteristics.

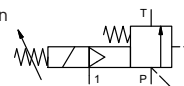
⚠ If order or application specifications are incomplete or imprecise there exists a risk of an incorrect technical design of the valve for the required application. As a consequence, the physical and / or chemical properties of the materials or seals used, may not be suitable for the intended application.

control valve manual

pressure range
orifice
connection
function

externally controlled

PN 5-120 bar
 DN 32 mm
 thread
 stepless pressure regulation



design

body materials

externally controlled with spring return

①	④
② steel galvanized	⑤
③	⑥

valve seat

seal materials

metal on metal
 FPM, PTFE

ports

function
pressure regulation range
flow rate
media

general specifications

HPB	threads G 1 1/2	options	SAE connections DIN ISO 6162
	stepless pressure regulation		
bar	5-120		
m³/h	14,4		
	liquid - highly viscous - contaminated		

abrasive media

flow direction

settling time

media temperature

ambient temperature

approvals

mounting

weight

additional equipment

P ⇌ T	as marked
ms	< 900
°C	0 to +60
°C	0 to +50
	mounting holes
kg	8,3
	security valve

nominal voltage

power consumption

protection

energized duty rating

connection

optional

additional equipment

max. temperature

explosion proof

electrical specifications

U _n	DC 24 V	options	special voltage upon request
U _n	AC 230 V 50 Hz		special voltage upon request
DC	4,8 W		2,5 W
AC	pick up 11,0 VA holding 8,5 VA		
IP65 (P54)	acc. DIN 40050		
ED	100%		
	plug acc. DIN EN 175301-803 form B, 3 positions x90° / wire diameter 6-8 mm		
M12x1	connector acc. DESINA		connector acc. VDMA
	illuminated plug with varistor		
media	60°C		
ambient	50°C		
E Ex e II T5	nominal voltage U _n	DC 24 V	3,25 W
	power consumption	AC 230 V 50 Hz	2,90 W

actuation pressure range

compressed air

control

actuator ports

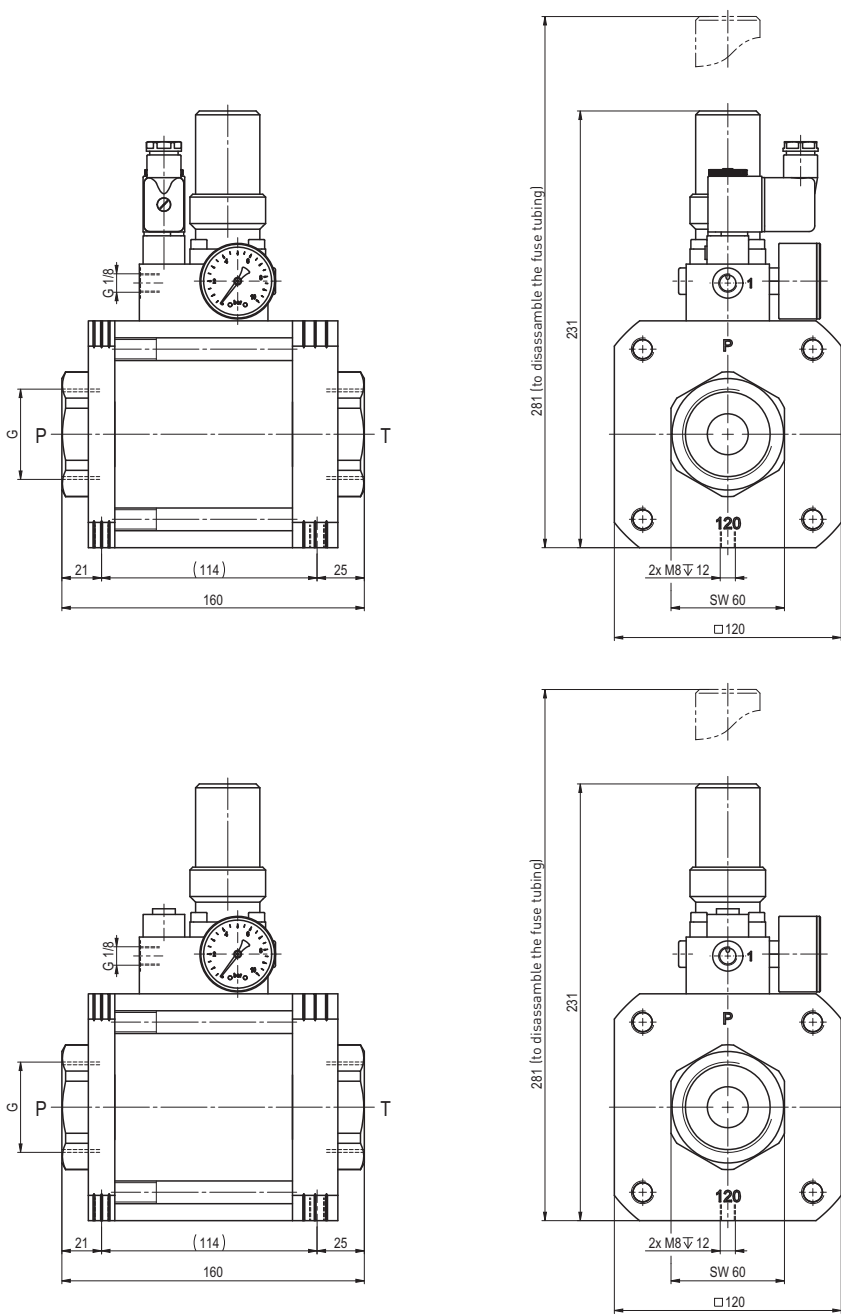
pneumatic specifications

bar	see actuation pressure-diagram	options	
	DIN ISO 8573-1 grade of compressed air quality 5/4/3		
	preferably 3/2 way pilot valve during low pressure circulation mode		
1	G 1/8		

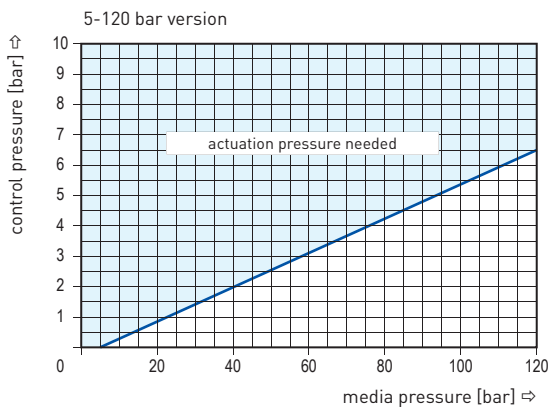
■ specifications not highlighted are standard
 ■ specifications highlighted in grey are optional

coax® data sheet - pressure limitation valve

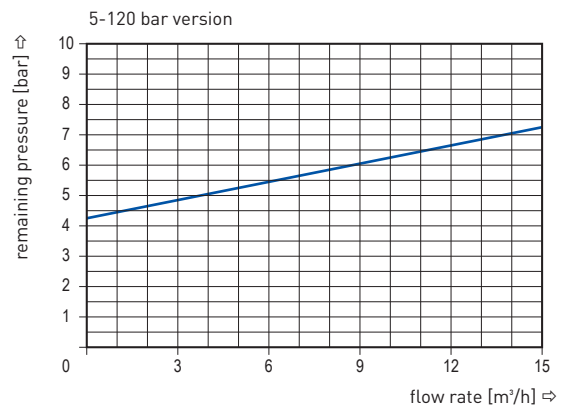
type HPB-H 32



actuation pressure-diagram



pressureless circulation mode



Sound creation during low pressure circulation mode and flow Q= 14,4 m³/h ca. 70 dbA