

08/2021



! Above stated body materials refer to the valve port connections that get in contact with the media only!

details needed

- orifice
- port
- function NC/NO
- operating pressure
- inlet pressure at A, B or C
- flow rate
- media
- media temperature
- ambient temperature
- nominal voltage

! The valves' technical design is based on media and application requirements. This can lead to deviations from the general specifications shown on the data sheet with regards to the design, sealing materials and characteristics.

! If order or application specifications are incomplete or imprecise there exists a risk of an incorrect technical design of the valve for the required application. As a consequence, the physical and / or chemical properties of the materials or seals used, may not be suitable for the intended application.

3/2 way valve

pressure range

orifice

connection

function

direct acting

PN 0-16 bar

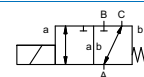
DN 10 mm

thread

valve

normally closed (A ► B)

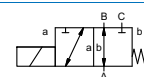
symbol **NC**



valve

normally open (A ► B)

symbol **NO**



design

body materials

pressure balanced, with spring return, intersecting switch-over

- ① brass
- ②
- ③ brass, nickel plated
- ⑤
- ④
- ⑥ stainless steel

valve seat

synthetic resin on metal

seal materials

NBR PTFE, FPM, CR, EPDM

ports

MK threads G 1/4 - G 3/4 **options** special threads

function

NC NO

pressure range

0-16 bar
A ⇒ B max. 16 / B ⇒ A max. 16 / A ⇒ C max. 16 / C ⇒ A max. 16

Kv value

m³/h 2,6

vacuum

leak rate < 10⁻⁶ mbar•L•s⁻¹

pressure-vacuum

P₁ ⇔ P₂ upon request

back pressure

P₂ > P₁ see pressure range
gaseous - liquid - contaminated

abrasive media

opening

damping

closing

flow direction

see pressure range

switching cycles

1/min 200

switching time

ms opening 80
closing 140

media temperature

°C DC: -20 to +40
AC: -20 to +40

ambient temperature

°C DC: -20 to +40
AC: -20 to +40

limit switches

LR/GL/WAZ
mounting brackets

manual override

approvals

mounting

weight

kg MK 2,2

additional equipment

upon request

nominal voltage

U_n DC 24 V +5%/-10% special voltage upon request
U_n AC 230 V +5%/-10% 40-60 Hz special voltage upon request

actuation

DC direct-current magnet
AC direct-current magnet with integrated rectifier

insulating rating

H 180°C

protection

IP68

energized duty rating

ED 100%

connection

terminal box
3 m flying leads

optional

additional equipment

current consumption

U _n	V-AC/DC	24	230	20	48	98	110	125	200
I _n	A	1,04	0,12	1,25	0,50	0,25	0,22	0,22	0,13

explosion proof

II 2 G Ex mb IIC T4 Gb
II 2 D Ex mb IIIC T130°C Db IP68
PTB 03 ATEX 2045 X

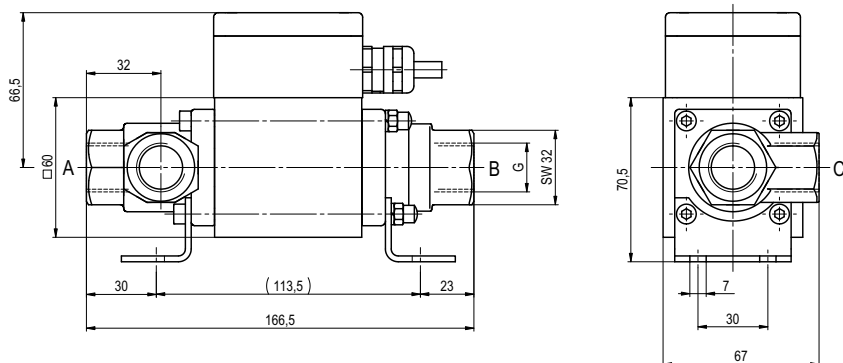
limit switches

■ specifications not highlighted are standard
■ specifications highlighted in grey are optional

coax® data sheet - coaxial valve

type MK 10 DR Ex

function: **NC**
closed when not energized (A ► B)



function: **NO**
open when not energized (A ► B)

