

type MK 15 DR TÜV
FK 15 DR TÜV

08/2021



⚠ Above stated body materials refer to the valve port connections that get in contact with the media only!

details needed

- orifice
- port
- function NC
- operating pressure
- inlet pressure at A, B or C
- flow rate
- media
- media temperature
- ambient temperature
- nominal voltage

⚠ The valves' technical design is based on media and application requirements. This can lead to deviations from the general specifications shown on the data sheet with regards to the design, sealing materials and characteristics.

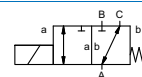
⚠ If order or application specifications are incomplete or imprecise there exists a risk of an incorrect technical design of the valve for the required application. As a consequence, the physical and / or chemical properties of the materials or seals used, may not be suitable for the intended application.

3/2 way valve

pressure range
orifice
connection
function

direct acting

PN 0-40 bar
DN 15 mm
thread/flange
valve
normally closed (A ► B)
symbol **NC**



design

body materials

pressure balanced, with spring return, intersecting switch-over
Ⓞ TÜV (steel, galvanized)

valve seat

seal materials

synthetic resin on metal
FPM, PTFE

general specifications

options

ports

function
pressure range

MK threads G 3/8 - G 3/4
FK flanges PN 40
NC
0-40 bar
A ⇒ B max. 40 / B ⇒ A max. 16 / A ⇒ C max. 40 / C ⇒ A max. 40

Kv value
vacuum
pressure-vacuum
back pressure
media

m³/h 4,3
leak rate
P₁ ⇔ P₂
P₂ > P₁ see pressure range
liquid fuels

abrasive media damping

flow direction
switching cycles
switching time

opening
closing see pressure range
1/min 200
ms opening 80
closing 80
°C DC: -10 to +140
AC: -10 to +140
°C DC: -10 to +60
AC: -10 to +60

media temperature

ambient temperature

limit switches
manual override

approvals
mounting
weight
additional equipment

mechanical
TÜV DIN EN ISO 23553-1 + E DIN 32725
mounting brackets
kg MK 4,3 FK 5,9

nominal voltage

actuation

electrical specifications **options**
U_n DC 24 V +5%/-10%
U_n AC 230 V +5%/-10% 40-60 Hz
DC direct-current magnet
AC direct-current magnet with separate rectifier

insulating rating
protection
energized duty rating
connection

H 180°C
IP65
ED 100%
M16x1,5 terminal box

optional
additional equipment
current consumption

N-coil
H-coil DC 24 V 2,30 A
AC 230 V 40-60 Hz 0,24 A

explosion proof

limit switches

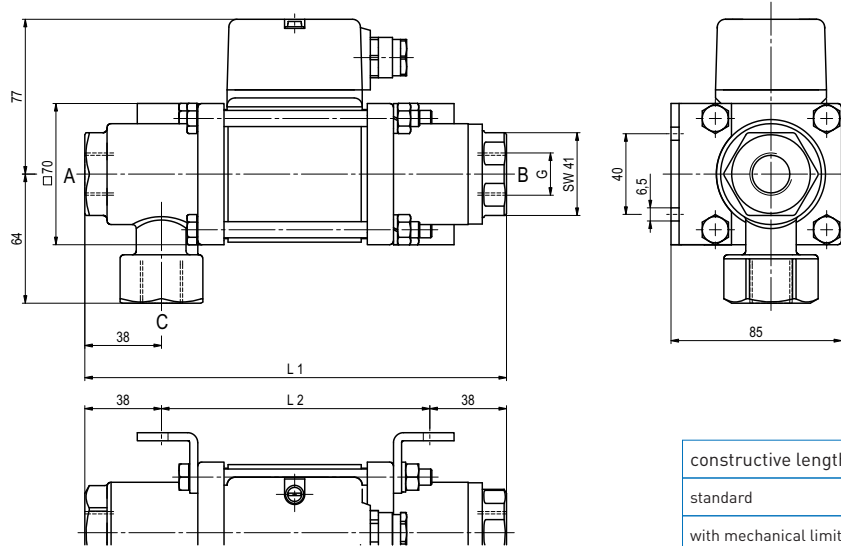
mechanical single pole double throw-SPDT

■ specifications not highlighted are standard
■ specifications highlighted in grey are optional

coax® data sheet - coaxial valve

type MK 15 DR TÜV
FK 15 DR TÜV

function: **NC**
closed when not energized (A ► B)



constructive length	L1	L2	L3
standard	209	133	265
with mechanical limit switches	229	153	285

function: **NC**
closed when not energized (A ► B)

