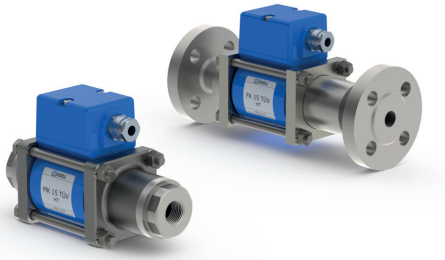


# coax® data sheet - coaxial valve

type MK 15 TÜV HT  
FK 15 TÜV HT



08/2021



**⚠** Above stated body materials refer to the valve port connections that get in contact with the media only!

### details needed

- orifice
- port
- function NC/NO
- operating pressure
- flow rate
- media
- media temperature
- ambient temperature
- nominal voltage

**⚠** The valves' technical design is based on media and application requirements. This can lead to deviations from the general specifications shown on the data sheet with regards to the design, sealing materials and characteristics.

**⚠** If order or application specifications are incomplete or imprecise there exists a risk of an incorrect technical design of the valve for the required application. As a consequence, the physical and / or chemical properties of the materials or seals used, may not be suitable for the intended application.

### 2/2-way valve

**pressure range**

**orifice**

**connection**

**function**

### direct acting

PN 0-40 bar

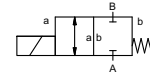
DN 15 mm

thread/flange

valve

normally closed

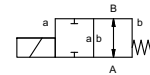
symbol **NC**



valve

normally open

symbol **NO**



pressure balanced, with spring return

Ⓢ TÜV (stainless steel)

### design

**body materials**

**valve seat**

synthetic resin on metal

**seal materials**

FPM, PTFE

**ports**

MK threads G 3/8 - G 3/4

FK flanges PN 40

**function**

NC

NO

**pressure range**

0-40

**Kv value**

m<sup>3</sup>/h 6,0

**vacuum**

leak rate

**pressure-vacuum**

P<sub>1</sub> ↔ P<sub>2</sub>

**back pressure**

P<sub>2</sub> > P<sub>1</sub>

**media**

liquid fuels - fuel oil EL, M, S and oils  
not acc. to DIN 51603, e.g. animal fat

available (max. 16 bar)

**abrasive media**

opening

**damping**

closing

**flow direction**

A ↔ B as marked

**switching cycles**

1/min 200

**switching time**

ms opening 80  
closing 80

**media temperature**

°C DC: -10 to +160

**ambient temperature**

°C AC: -10 to +160  
DC: -10 to +60  
AC: -10 to +60

**limit switches**

mechanical

**manual override**

**approvals**

TÜV DIN EN ISO 23553-1

**mounting**

mounting brackets

**weight**

kg MK 3,8 FK 5,0

**additional equipment**

### electrical specifications

### options

U<sub>n</sub> DC 24 V +5%/-10%

U<sub>n</sub> AC 230 V +5%/-10% 40-60 Hz

DC direct-current magnet

AC direct-current magnet with separate rectifier

H 180°C

IP65

ED 100%

M16x1,5 terminal box

N-coil

H-coil DC 24 V 2,30 A  
AC 230 V 40-60 Hz 0,24 A

mechanical

single pole double throw-SPDT

**nominal voltage**

**actuation**

**insulating rating**

**protection**

**energized duty rating**

**connection**

**optional**

**additional equipment**

**current consumption**

**explosion proof**

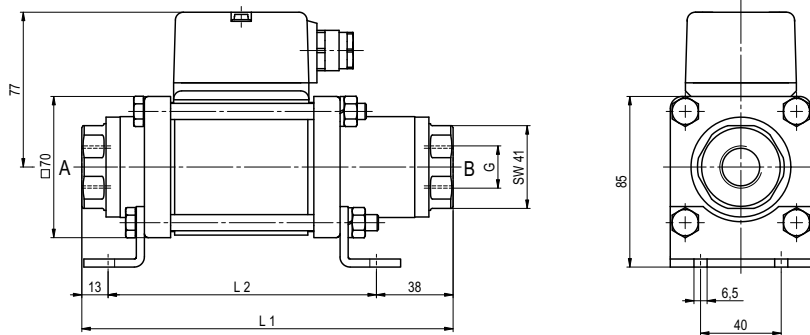
**limit switches**

■ specifications not highlighted are standard  
■ specifications highlighted in grey are optional

# coax® data sheet - coaxial valve

type MK 15 TÜV HT  
FK 15 TÜV HT

function: **NC**  
closed when not energized



constructive length	L1	L2	L3
standard	184	133	241
with mechanical limit switches	204	153	261

function: **NO**  
open when not energized

