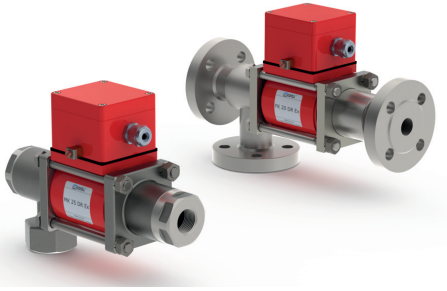


08/2021



⚠ Above stated body materials refer to the valve port connections that get in contact with the media only!

details needed

- orifice
- port
- function NC/NO
- operating pressure
- inlet pressure at A, B or C
- flow rate
- media
- media temperature
- ambient temperature
- nominal voltage

⚠ The valves' technical design is based on media and application requirements. This can lead to deviations from the general specifications shown on the data sheet with regards to the design, sealing materials and characteristics.

⚠ If order or application specifications are incomplete or imprecise there exists a risk of an incorrect technical design of the valve for the required application. As a consequence, the physical and / or chemical properties of the materials or seals used, may not be suitable for the intended application.

3/2 way valve

pressure range

orifice

connection

function

direct acting

PN 0-40 bar

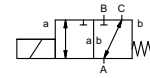
DN 20 mm

thread/flange

valve

normally closed (A ► B)

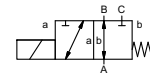
symbol **NC**



valve

normally open (A ► B)

symbol **NO**



design

body materials

pressure balanced, with spring return, intersecting switch-over

① brass

② steel galvanized

③ brass, nickel plated

⑤ without non-ferr. Metals

④ steel, nickel plated

⑥ stainless steel

valve seat

synthetic resin on metal

seal materials

NBR

PTFE, FPM, CR, EPDM

ports

general specifications

options

MK threads G 3/4 - G 1 1/4

special threads

FK flanges PN 16 / 40

special flanges

NC

NO

bar 0-16 / 0-40

A ⇒ B max. 40 / B ⇒ A max. 16 / A ⇒ C max. 40 / C ⇒ A max. 16

m³/h 6,7

leak rate

< 10⁻⁶ mbar•L•s⁻¹

P₁ ⇔ P₂

upon request

P₂ > P₁ see pressure range

gaseous - liquid - highly viscous -
gelatinous - contaminated

upon request

opening

closing

see pressure range

1/min 150

ms opening 110

closing 110

°C DC: -20 to +40

AC: -20 to +40

°C DC: -20 to +40

AC: -20 to +40

inductive

LR/GL/WAZ

mounting brackets

kg MK 6,0 FK 8,4

upon request

electrical specifications

options

U_n DC 24 V +5%/-10%

special voltage upon request

U_n AC 230 V +5%/-10% 40-60 Hz

special voltage upon request

DC direct-current magnet

AC direct-current magnet with separate
rectifier outside of the explosion-proof
area

sand sealed rectifier

H 180°C

IP65

ED 100%

M16x1,5 terminal box

U_n V-DC 24 200

48 98 110 220

I_n A 1,34 0,17

0,68 0,32 0,28 0,14

II 2 G Ex mb e II T4

II 2 D Ex tD A21 IP65 T130 °C

PTB 03 ATEX 2049 X

inductive NAMUR

circuit amplifier

nominal voltage

actuation

insulating rating

protection

energized duty rating

connection

optional

additional equipment

current consumption

explosion proof

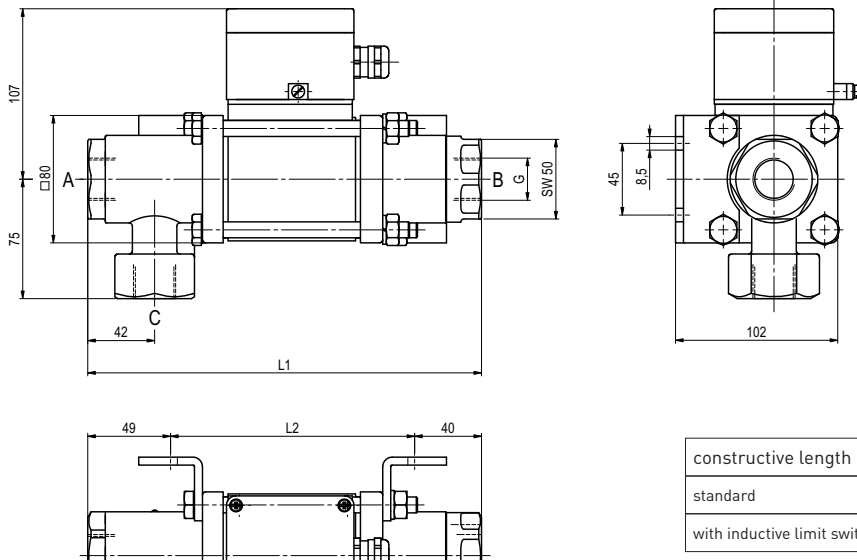
limit switches

■ specifications not highlighted are standard
■ specifications highlighted in grey are optional

coax® data sheet - coaxial valve

type MK 20 DR Ex
FK 20 DR Ex

function: **NC**
closed when not energized (A ► B)



constructive length	L1	L2	L3
standard	247	158	301
with inductive limit switches	291	202	345

flanges PN	DIN	ØD	Øk	Ød
16	EN 1092-1	105	75	14
40	EN 1092-2	105	75	14

function: **NO**
open when not energized (A ► B)

