

coax® data sheet - coaxial valve

type MK 20 DR TÜV
FK 20 DR TÜV



08/2021



! Above stated body materials refer to the valve port connections that get in contact with the media only!

details needed

- orifice
- port
- function NC
- operating pressure
- inlet pressure at A, B or C
- flow rate
- media
- media temperature
- ambient temperature
- nominal voltage

! The valves' technical design is based on media and application requirements. This can lead to deviations from the general specifications shown on the data sheet with regards to the design, sealing materials and characteristics.

! If order or application specifications are incomplete or imprecise there exists a risk of an incorrect technical design of the valve for the required application. As a consequence, the physical and / or chemical properties of the materials or seals used, may not be suitable for the intended application.

3/2 way valve

pressure range

orifice

connection

function

direct acting

PN 0-40 bar

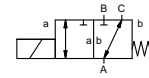
DN 20 mm

thread/flange

valve

normally closed (A ► B)

symbol **NC**



design

body materials

pressure balanced, with spring return, intersecting switch-over

☉ TÜV (steel, galvanized)

valve seat

seal materials

synthetic resin on metal

FPM, PTFE

general specifications

options

MK	threads G 3/4 - G 1 1/4
FK	flanges PN 40
	NC
bar	0-40
	A ⇒ B max. 40 / B ⇒ A max. 16 / A ⇒ C max. 40 / C ⇒ A max. 40
m³/h	6,7
leak rate	
P ₁ ⇔ P ₂	
P ₂ > P ₁	see pressure range
media	liquid fuels
opening	
closing	see pressure range
1/min	150
ms	opening 110
	closing 110
°C	DC: -10 to +140
	AC: -10 to +140
°C	DC: -10 to +60
	AC: -10 to +60

mechanical

TÜV	DIN EN ISO 23553-1 + E DIN 32725
kg	MK 6,0 FK 8,4

mounting brackets

electrical specifications

options

U _n	DC 24 V +5%/-10%
U _n	AC 230 V +5%/-10% 40-60 Hz
DC	direct-current magnet
AC	direct-current magnet with separate rectifier

ports

function

pressure range

Kv value

vacuum

pressure-vacuum

back pressure

media

abrasive media

damping

flow direction

switching cycles

switching time

media temperature

ambient temperature

limit switches

manual override

approvals

mounting

weight

additional equipment

nominal voltage

actuation

insulating rating

protection

energized duty rating

connection

optional

additional equipment

current consumption

explosion proof

limit switches

mechanical

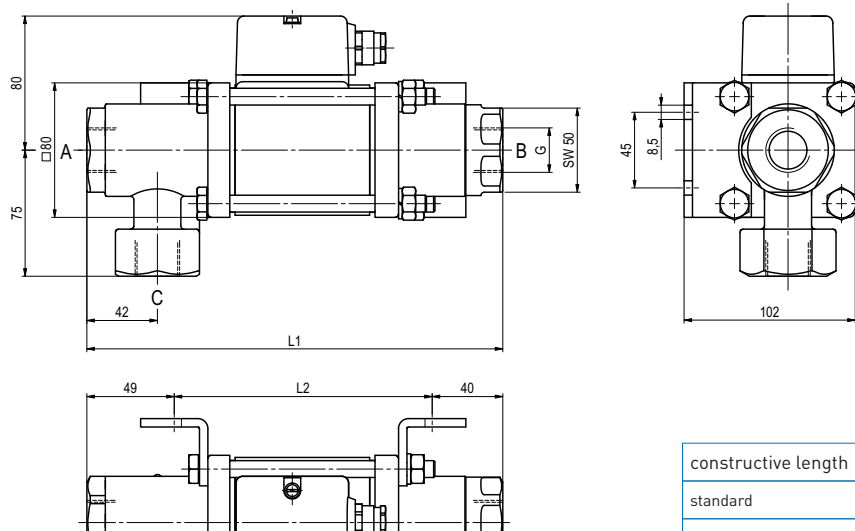
single pole double throw-SPDT

■ specifications not highlighted are standard
■ specifications highlighted in grey are optional

coax® data sheet - coaxial valve

type MK 20 DR TÜV
FK 20 DR TÜV

function: **NC**
closed when not energized (A ► B)



constructive length	L1	L2	L3
standard	247	158	301
with mechanical limit switches	267	178	321

function: **NC**
closed when not energized (A ► B)

