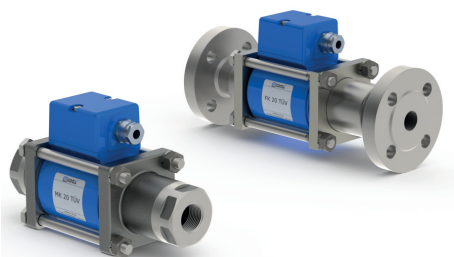


08/2021



**⚠** Above stated body materials refer to the valve port connections that get in contact with the media only!

**details needed**

- orifice
- port
- function NC/NO
- operating pressure
- flow rate
- media
- media temperature
- ambient temperature
- nominal voltage

**⚠** The valves' technical design is based on media and application requirements. This can lead to deviations from the general specifications shown on the data sheet with regards to the design, sealing materials and characteristics.

**⚠** If order or application specifications are incomplete or imprecise there exists a risk of an incorrect technical design of the valve for the required application. As a consequence, the physical and / or chemical properties of the materials or seals used, may not be suitable for the intended application.

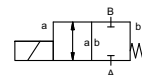
**2/2-way valve**

**pressure range**  
**orifice**  
**connection**  
**function**

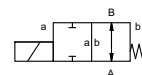
**direct acting**

PN 0-40 bar  
DN 20 mm  
thread/flange

valve normally closed  
symbol **NC**



valve normally open  
symbol **NO**



**design**

**body materials**

pressure balanced, with spring return

⊙ TÜV (steel, galvanized)

**valve seat**

**seal materials**

synthetic resin on metal

FPM, PTFE

**general specifications**

**options**

MK threads G 3/4 - G 1 1/4  
FK flanges PN 40  
bar 0-40

m³/h 8,4  
leak rate  
P<sub>1</sub> ↔ P<sub>2</sub>  
P<sub>2</sub> > P<sub>1</sub> liquid fuels available (max. 16 bar)

**ports**

**function**  
**pressure range**

**Kv value**

**vacuum**  
**pressure-vacuum**  
**back pressure**  
**media**

**abrasive media**  
**damping**

**flow direction**  
**switching cycles**  
**switching time**

**media temperature**

**ambient temperature**

**limit switches**  
**manual override**

**approvals**  
**mounting**  
**weight**  
**additional equipment**

opening  
closing  
A ↔ B as marked  
1/min 150  
ms opening 110  
closing 110  
°C DC: -10 to +140  
AC: -10 to +140  
°C DC: -10 to +60  
AC: -10 to +60

TÜV DIN EN ISO 23553-1 + E DIN 32725  
kg MK 5,5 FK 7,5

**electrical specifications**

**options**

U<sub>n</sub> DC 24 V +5%/-10%  
U<sub>n</sub> AC 230 V +5%/-10% 40-60 Hz  
DC direct-current magnet  
AC direct-current magnet with separate rectifier

**nominal voltage**

**actuation**

**insulating rating**  
**protection**  
**energized duty rating**  
**connection**

H 180°C  
IP65  
ED 100%  
M16x1,5 terminal box

**optional**  
**additional equipment**  
**current consumption**

N-coil  
H-coil DC 24 V 2,64 A  
AC 230 V 40-60 Hz 0,30 A

**explosion proof**

**limit switches**

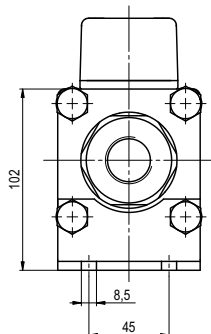
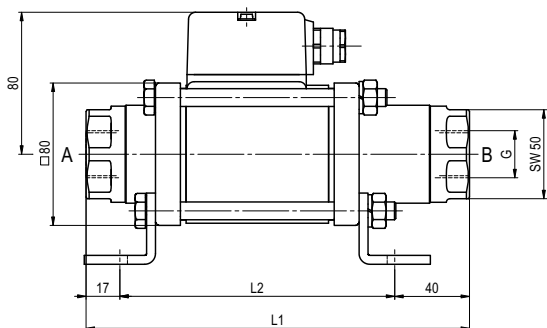
mechanical single pole double throw-SPDT

■ specifications not highlighted are standard  
■ specifications highlighted in grey are optional

# coax® data sheet - coaxial valve

type MK 20 TÜV  
FK 20 TÜV

function: **NC**  
closed when not energized



constructive length	L1	L2	L3
standard	215	158	269
with mechanical limit switches	235	178	289

function: **NO**  
open when not energized

