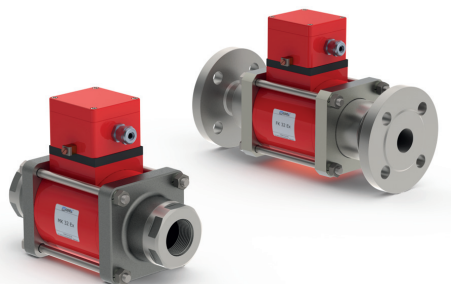


type MK 32 Ex
FK 32 Ex

08/2021



⚠ Above stated body materials refer to the valve port connections that get in contact with the media only!

details needed

- orifice
- port
- function NC/NO
- operating pressure
- flow rate
- media
- media temperature
- ambient temperature
- nominal voltage

⚠ The valves' technical design is based on media and application requirements. This can lead to deviations from the general specifications shown on the data sheet with regards to the design, sealing materials and characteristics.

⚠ If order or application specifications are incomplete or imprecise there exists a risk of an incorrect technical design of the valve for the required application. As a consequence, the physical and / or chemical properties of the materials or seals used, may not be suitable for the intended application.

2/2-way valve

pressure range

orifice

connection

function

design

body materials

valve seat

seal materials

ports

function

pressure range

Kv value

vacuum

pressure-vacuum

back pressure

media

abrasive media

damping

flow direction

switching cycles

switching time

media temperature

ambient temperature

limit switches

manual override

approvals

mounting

weight

additional equipment

nominal voltage

actuation

insulating rating

protection

energized duty rating

connection

optional

additional equipment

current consumption

explosion proof

limit switches

direct acting

PN 0-64 bar

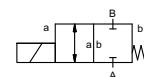
DN 32 mm

thread/flange

valve

normally closed

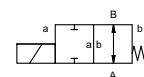
symbol **NC**



valve

normally open

symbol **NO**



pressure balanced, with spring return

① brass

② steel galvanized

③ brass, nickel plated

⑤ without non-ferr. Metals

④ steel, nickel plated

⑥ stainless steel

synthetic resin on metal

NBR

PTFE, FPM, CR, EPDM

general specifications

MK threads G 1 1/4 - G 1 1/2
FK flanges PN 16 / 40 / 100
NC
0-16 / 0-40 / 0-64

options

special threads
special flanges
NO

m³/h 14,1

leak rate

< 10⁻⁶ mbar•L•s⁻¹

P₁ ↔ P₂

upon request

P₂ > P₁

available (max. 16 bar)

gaseous - liquid - highly viscous -
gelatinous - contaminated

upon request

opening

upon request

closing

available

A ↔ B

as marked

bi-directional (max. 16 bar)

1/min

120

ms

opening 440

closing 250

°C

DC: -20 to +40

AC: -20 to +40

°C

DC: -20 to +40

AC: -20 to +40

inductive

available

LR/GL/WAZ

mounting brackets

kg

MK 13,5 FK 17,5

upon request

electrical specifications

options

U_n

DC 24 V +5%/-10%

special voltage upon request

U_n

AC 230 V +5%/-10% 40-60 Hz

special voltage upon request

DC

direct-current magnet

AC

direct-current magnet with separate
rectifier outside of the explosion-proof
area

sand sealed rectifier

H

180°C

IP65

ED

100%

M16x1,5

terminal box

U_n

V-DC 24 200

20 48 98 110 210 220 230

I_n

A 2,05 0,29

2,72 1,07 0,54 0,48 0,25 0,25 0,21

II 2 G Ex mb e II T4

II 2 D Ex tD A21 IP65 T130 °C

PTB 03 ATEX 2051 X

inductive NAMUR

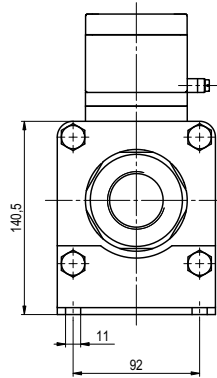
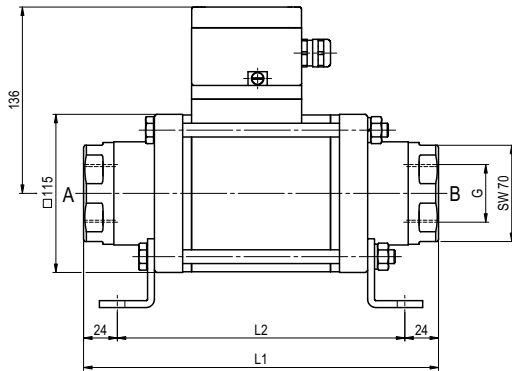
circuit amplifier

■ specifications not highlighted are standard
■ specifications highlighted in grey are optional

coax® data sheet - coaxial valve

type MK 32 Ex
FK 32 Ex

function: **NC**
closed when not energized



constructive length	L1	L2	L3
standard	258	210	324
with inductive limit switches	299	251	365
with manual override / inductive limit switches	299	251	365

flanges PN	DIN	$\varnothing D$	$\varnothing k$	$\varnothing d$
16	EN 1092-1	140	100	18
40	EN 1092-1	140	100	18
100	EN 1092-1	155	110	22

function: **NO**
open when not energized

