

08/2021



⚠ Above stated body materials refer to the valve port connections that get in contact with the media only!

details needed

- orifice
- port
- function NC
- operating pressure
- flow rate
- media
- media temperature
- ambient temperature
- nominal voltage
- switching cycles

⚠ The valves' technical design is based on media and application requirements. This can lead to deviations from the general specifications shown on the data sheet with regards to the design, sealing materials and characteristics.

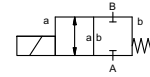
⚠ If order or application specifications are incomplete or imprecise there exists a risk of an incorrect technical design of the valve for the required application. As a consequence, the physical and / or chemical properties of the materials or seals used, may not be suitable for the intended application.

2/2-way valve

pressure range
orifice
connection
function

direct acting

PN 0-400 bar
 DN 2-8 mm
 thread
 valve normally closed
 symbol **NC**



design

body materials

direct acting, with spring return

① 1.4104/steel, nickel plated
 ②
 ③
 ④ stainless steel, steel, nickel plated

valve seat

synthetic resin on metal

seal materials

NBR, PTFE **FPM**

ports

general specifications

options

function
pressure range

KB threads G 3/8 **special threads**

Kv value
vacuum
pressure-vacuum
back pressure
media

	NC (1-coil operation)	NC (2-coil operation)
bar	30 50 80 120 250 300	40 70 100 150 300 400
DN	8 6 5 4 3 2	8 6 5 4 3 2
l/min	24,0 17,4 13,5 11,0 4,1 1,7	24,0 17,4 13,5 11,0 4,1 1,7
leak rate	< 10 ⁻⁶ mbar•L•s ⁻¹	
P ₁ ↔ P ₂	upon request	
P ₂ > P ₁	upon request	
	gaseous - liquid	

abrasive media damping

	NC (1-coil operation)	NC (2-coil operation)
opening		
closing		
A ↔ B	as marked	bi-directional upon request
1/min	260	370
ms	opening 60 closing 170	opening 40 closing 120
°C	DC: -20 to +100 AC: -20 to +100	<-40 °C / -196 °C and >100 °C upon request <-40 °C / -196 °C and >100 °C upon request
°C	DC: -20 to +80 AC: -20 to +80	

flow direction
switching cycles
switching time

media temperature
ambient temperature

limit switches
manual override
approvals
mounting
weight
additional equipment

WAZ
 kg 2,5
 upon request

nominal voltage

electrical specifications

options

actuation

U_n DC 24 V +5%/-10% **special voltage upon request**
 U_n AC 230 V +5%/-10% 40-60 Hz **special voltage upon request**
 DC direct-current magnet
 AC direct-current magnet with integrated rectifier **above 100 °C with separate rectifier**

insulating rating
protection
energized duty rating
connection

H 180°C
 IP65
 ED 100% (upon request)
 plug acc. DIN EN 175301-803 form A, 4 positions x90° / wire diameter 6-8 mm **terminal box M16x1,5**

optional
additional equipment
current consumption

	NC (1-coil operation)	NC (2-coil operation)
M12x1	connector acc. DESINA illuminated plug with varistor	connector acc. VDMA
1-coil operation	DC 24 V 2,30 A	
2-coil operation	AC 230 V 40-60 Hz 0,24 A	
	pick up power	DC 24 V 5,90 A / AC 230 V 0,76A
	holding power	DC 24 V 1,58 A / AC 230 V 0,16A

explosion proof

limit switches

■ specifications not highlighted are standard
 ■ specifications highlighted in grey are optional

function: **NC**
closed when not energized

