

08/2021



⚠ Above stated body materials refer to the valve port connections that get in contact with the media only!

2/2-way valve

pressure range

orifice

connection

function

externally controlled

PN 0-25 bar

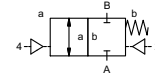
DN 5 mm

thread

valve

normally closed

symbol **NC**



design

body materials

pressure balanced, with spring return

① aluminium

②

③

⑤

④

⑥ stainless steel

valve seat

metal on metal

seal materials

EPDM, NBR, FPM, metal bellow (1.4571)

ports

function

pressure range

Kv value

vacuum

media

general specifications

PLB threads G 1/4 - G 3/8

NC

bar 0-25

l/min 18,0

leak rate low^{vacuum}

liquid - pasty

options

flow direction A ⇌ B

1/min 60

ms opening 50

closing 50

°C 60

kg 0,36

preferably 5/2 way pilot valve

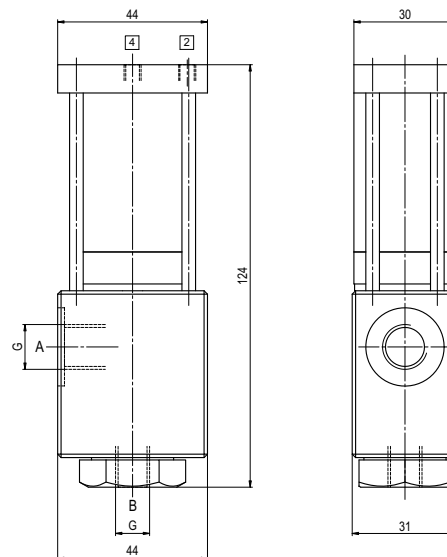
via 3/2 way pilot valve

2/4 M5

bar 4-8

⚠ The valves' technical design is based on media and application requirements. This can lead to deviations from the general specifications shown on the data sheet with regards to the design, sealing materials and characteristics.

⚠ If order or application specifications are incomplete or imprecise there exists a risk of an incorrect technical design of the valve for the required application. As a consequence, the physical and / or chemical properties of the materials or seals used, may not be suitable for the intended application.



■ specifications not highlighted are standard
 ■ specifications highlighted in grey are optional