

03/2022



⚠ Above stated body materials refer to the valve port connections that get in contact with the media only!

details needed for main valve

- orifice
- port
- pressure regulating range
- flow rate
- media
- media temperature
- ambient temperature

details needed for proportional valve

- nominal voltage
- actuation pressure range min/max
- setpoint signal

⚠ The valves' technical design is based on media and application requirements. This can lead to deviations from the general specifications shown on the data sheet with regards to the design, sealing materials and characteristics.

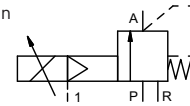
⚠ If order or application specifications are incomplete or imprecise there exists a risk of an incorrect technical design of the valve for the required application. As a consequence, the physical and / or chemical properties of the materials or seals used, may not be suitable for the intended application. To avoid hydraulic shocks in pipelines, the flow velocities must be taken into account when designing valves for liquids.

control valve proportional

pressure range
orifice
connection
function

externally controlled

PN 0-100 bar
DN 15 mm
thread
stepless pressure regulation



operating principle

body material

externally controlled with spring return

- | | |
|-------------|---|
| ① aluminium | ③ |
| ① | ④ |
| ② | ⑥ |

valve seat

synthetic materials on metal

seal materials

EPDM, PU, HNBR **FPM**

ports

SPP threads G 3/4

function

stepless pressure regulation

pressure regulation range

bar SPP-1 5-40 **SPP-2 5-100**

flow rate

m³/h max. 6,0

media

gaseous - liquid

abrasive media

P: supply pressure A: control pressure R: venting

flow direction

ms < 200

settling time

°C 0 to +60

media temperature

°C 0 to +50

ambient temperature

approvals

WAZ

mounting

mounting brackets

weight

kg 7,5 **7,9**

additional equipment

electrical specifications

options

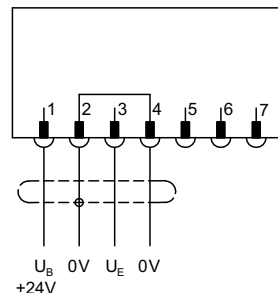
U_B DC 24 V (max. residual ripple 10 %)
DC < 0,7 A
U_E 0-10 V (RE 100 KΩ) **4-20 mA (RE 250 KΩ)**
IP65 (P54) acc. DIN 40050
ED 100 % (observe the connection conditions accordingly)
plug with 7 contacts / wire diameter 6-8 mm

pneumatic specifications

options

bar see actuation pressure-diagram
DIN ISO 8573-1 grade of compressed air quality 5/4/3
via 3/2 way proportional valve
1 G 1/8

connection plan /



connection conditions

When supplying the electrical set point signal to the proportional valve, the actuating air must already be present. (see actuation pressure-diagram).

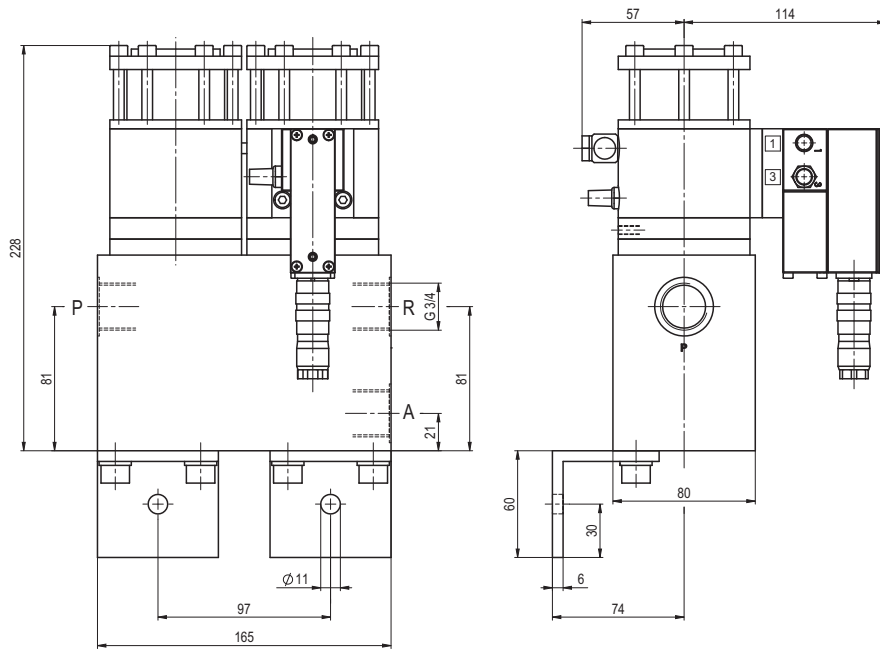
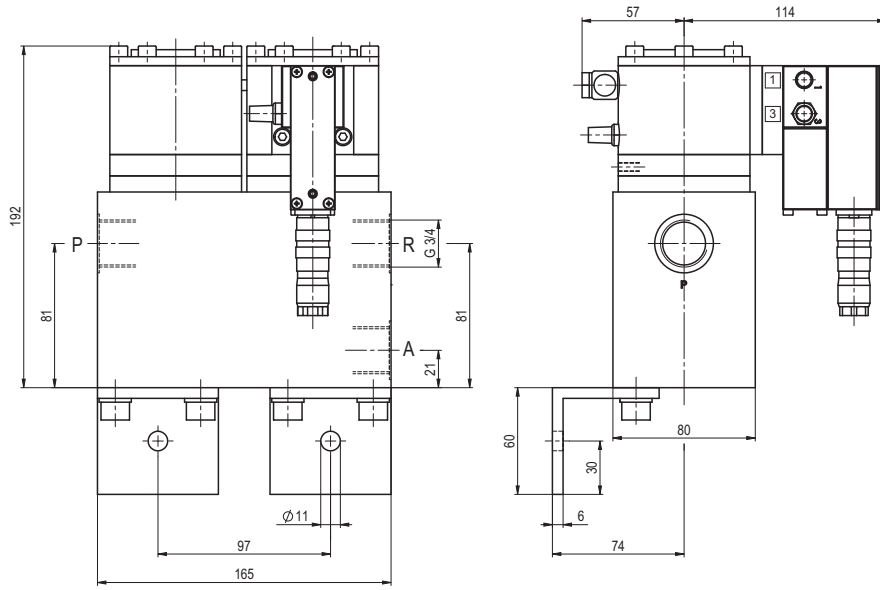
position of installation

arbitrary, but regulator not downwards.

■ specifications not highlighted are standard
■ specifications highlighted in grey are optional

coax® data sheet - 3/2 way pressure control valve

type SPP-1 15 DR



actuation pressure-diagram

