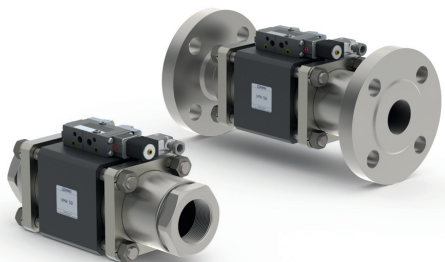


type VMK 50  
VFK 50

08/2021



**⚠** Above stated body materials refer to the valve port connections that get in contact with the media only!

**details needed for main valve**

- orifice
- port
- function NC/NO
- operating pressure
- flow rate
- media
- media temperature
- ambient temperature
- type of actuation

**details needed for pneumatic actuation**

- nominal voltage
- type of protection
- actuation pressure range min/max
- pilot valve type

**details needed for hydraulic actuation**

- actuation pressure range min/max
- hydraulic control valve function

**⚠** The valves' technical design is based on media and application requirements. This can lead to deviations from the general specifications shown on the data sheet with regards to the design, sealing materials and characteristics.

**⚠** If order or application specifications are incomplete or imprecise there exists a risk of an incorrect technical design of the valve for the required application. As a consequence, the physical and / or chemical properties of the materials or seals used, may not be suitable for the intended application.

**2/2-way valve**

**pressure range**  
**orifice**  
**connection**  
**function**

**design**

**body materials**

**valve seat**

**seal materials**

**ports**

**function**  
**pressure range**

**Kv value**  
**vacuum**  
**pressure-vacuum**

**back pressure**  
**media**

**abrasive media**  
**damping**

**flow direction**  
**switching cycles**  
**switching time**

**media temperature**  
**ambient temperature**  
**flush ports**  
**leak ports**  
**limit switches**  
**manual override**  
**approvals**  
**mounting**  
**weight**  
**additional equipment**

**nominal voltage**

**power consumption**

**protection**  
**energized duty rating**  
**connection**  
**optional additional equipment**  
**max. temperature**

**explosion proof**

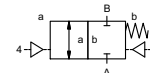
**actuation pressure range**  
**air consumption**  
**cycle speed**  
**control**  
**pilot valve interface**  
**actuator ports**

**actuation pressure range**  
**control**  
**actuator ports**  
**by media**

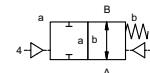
**externally controlled**

PN 0-100 bar  
DN 50 mm  
thread/flange

valve normally closed  
symbol **NC**



valve normally open  
symbol **NO**



pressure balanced, with spring return

- |                        |                            |
|------------------------|----------------------------|
| ①                      | ② steel galvanized         |
| ③                      | ⑤ without non-ferr. Metals |
| ④ steel, nickel plated | ⑥ stainless steel          |

synthetic resin on metal

NBR PTFE, FPM, CR, EPDM

**general specifications**

VMK threads G 2  
VFK flanges PN 64 / 100  
NC  
0-64 / 0-100

**options**

special threads  
special flanges  
NO  
> 100 bar upon request

m<sup>3</sup>/h 43,0  
leak rate < 10<sup>-6</sup> mbar•L•s<sup>-1</sup>  
P<sub>1</sub> ⇌ P<sub>2</sub> pressure side max. 100 bar  
vacuum side leak rate upon request  
available (max. 16 bar)

P<sub>2</sub> > P<sub>1</sub> gaseous - liquid - highly viscous -  
gelatinous - pasty - contaminated

opening by throttles on pilot valve  
closing as marked  
A ⇌ B bi-directional upon request

1/min 100  
ms opening 150-3000  
closing 150-3000

°C direct mounted pilot valve 60 remote mounted pilot valve outside  
°C direct mounted pilot valve 50 temperatur range of media max. 160 °C

available  
available  
inductive / mechanical upon request  
via pilot valve  
LR/GL/WAZ  
mounting brackets

**electrical specifications**

U<sub>n</sub> DC 24 V special voltage upon request  
U<sub>n</sub> AC 230 V 50 Hz special voltage upon request  
DC 4,8 W 2,5 W [actuation pressure range 4-7 bar]

**options**

AC pick up 11,0 VA holding 8,5 VA  
IP65 (P54) acc. DIN 40050  
ED 100%

plug acc. DIN EN 175301-803 form B, 4 positions x90° / wire diameter 6-8 mm  
M12x1 connector acc. DESINA connector acc. VDMA  
illuminated plug with varistor

media 60°C  
ambient 50°C  
E Ex e II T5 nominal voltage U<sub>n</sub> DC 24 V 3,25 W  
power consumption AC 230 V 50 Hz 2,90 W

**pneumatic specifications**

bar 4-10  
cm<sup>3</sup>/stroke 65  
main valve speed variable by throttleson pilot valve  
preferably 5/2 way pilot valve

**options**

co-ax / Namur ISO 1  
2/4 G 1/8 G 1/4

**hydraulic specifications**

bar 15-30 / 30-60  
preferably 4/2 way control valve  
X/Y G 1/4 NPT 1/4

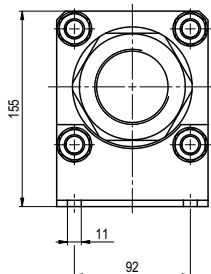
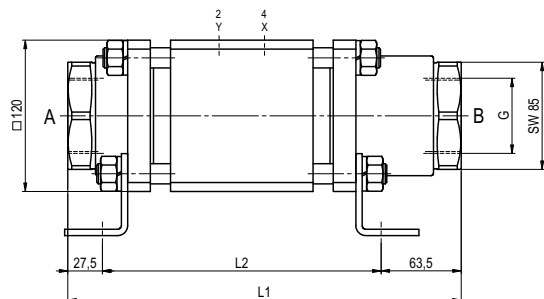
**options**

■ specifications not highlighted are standard  
■ specifications highlighted in grey are optional

# coax® data sheet - coaxial valve

type VMK 50  
VFK 50

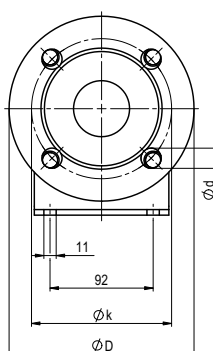
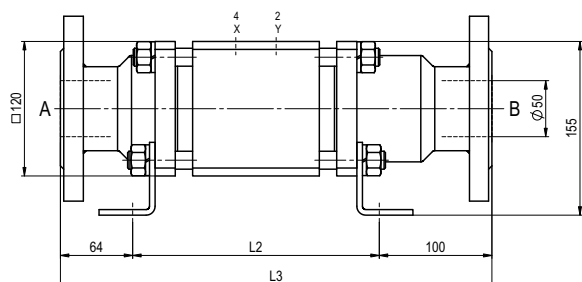
function: **NC**  
closed when not energized



constructive length	L1	L2	L3
standard	312	221	385
with inductive limit switches	312	221	385
with force-feed lubrication nipple	312	221	385
with mechanical limit switches	-	-	-

flanges PN	DIN	ØD	Øk	Ød
64	EN 1092-1	180	135	22
100	EN 1092-1	195	145	26

function: **NO**  
open when not energized



### pneumatic specifications

