

08/2021



⚠ Above stated body materials refer to the valve port connections that get in contact with the media only!

details needed for main valve

- orifice
- port
- function NC/NO
- operating pressure
- inlet pressure at A, B or C
- flow rate
- media
- media temperature
- ambient temperature
- type of actuation

details needed for pneumatic actuation

- nominal voltage
- type of protection
- actuation pressure range min/max
- pilot valve type

details needed for hydraulic actuation

- actuation pressure range min/max
- hydraulic control valve function

⚠ The valves' technical design is based on media and application requirements. This can lead to deviations from the general specifications shown on the data sheet with regards to the design, sealing materials and characteristics.

⚠ If order or application specifications are incomplete or imprecise there exists a risk of an incorrect technical design of the valve for the required application. As a consequence, the physical and / or chemical properties of the materials or seals used, may not be suitable for the intended application.

■ specifications not highlighted are standard
 ■ specifications highlighted in grey are optional

3/2 way valve

- pressure range**
- orifice**
- connection**
- function**

design

body materials

valve seat

seal materials

ports

- function**
- pressure range**

- Kv value**
- vacuum**
- pressure-vacuum**

- back pressure**
- media**

- abrasive media**
- damping**

- flow direction**
- switching cycles**
- switching time**

- media temperature**
- ambient temperature**
- flush ports**
- leak ports**
- limit switches**
- manual override**
- approvals**
- mounting**
- weight**
- additional equipment**

nominal voltage

power consumption

- protection**
- energized duty rating**
- connection**
- optional additional equipment**
- max. temperature**

explosion proof

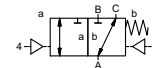
- actuation pressure range**
- air consumption**
- cycle speed**
- control**
- pilot valve interface**
- actuator ports**

- actuation pressure range**
- control**
- actuator ports**
- by media**

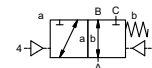
externally controlled

- PN 0-16 bar
- DN 150 mm
- flange

- valve normally closed (A ► B)
- symbol **NC**



- valve normally open (A ► B)
- symbol **NO**



pressure balanced, with spring return, intersecting switch-over

- ① steel
- ② steel galvanized
- ③ without non-ferr. Metals
- ④ stainless steel
- ⑤ steel, nickel plated

synthetic resin on metal

- NBR
- PTFE, FPM, CR, EPDM

general specifications

VSV-F	flanges PN 16	special flanges
	NC	NO
bar	0-16	
	A ⇒ B max. 16 / B ⇒ A max. 16 / A ⇒ C max. 16 / C ⇒ A max. 16	
m ³ /h	274,0	
leak rate		< 10 ⁻⁶ mbar•L•s ⁻¹
P ₁ ⇔ P ₂		pressure side max. 16 bar vacuum side leak rate upon request
P ₂ > P ₁	see pressure range	
	gaseous - liquid - highly viscous - gelatinous - pasty - contaminated	
		available
opening	by throttles on pilot valve	
closing	see pressure range	
1/min	20	
ms	opening 600-3000	
	closing 600-3000	
°C	direct mounted pilot valve 60	remote mounted pilot valve outside
°C	direct mounted pilot valve 50	temperatur range of media max. 160 °C
		available
		available
		inductive / mechanical upon request
	via pilot valve	
		LR/GL/WAZ
kg	VSV-F 97,0	upon request

electrical specifications

U _n	DC 24 V	special voltage upon request
U _n	AC 230 V 50 Hz	special voltage upon request
DC	4,8 W	2,5 W [actuation pressure range 4-7 bar]
AC	pick up 11,0 VA holding 8,5 VA	
IP65 (P54)	acc. DIN 40050	
ED	100%	
	plug acc. DIN EN 175301-803 form B, 4 positions x90° / wire diameter 6-8 mm	
M12x1	connector acc. DESINA	connector acc. VDMA
	illuminated plug with varistor	
media	60°C	
ambient	50°C	
E Ex e II T5	nominal voltage U _n	DC 24 V 3,25 W
	power consumption	AC 230 V 50 Hz 2,90 W

pneumatic specifications

bar	4-10	
cm ³ /stroke	550	
	main valve speed variable by throttleson pilot valve preferably 5/2 way pilot valve	
2/4	G 1/4	G 3/8

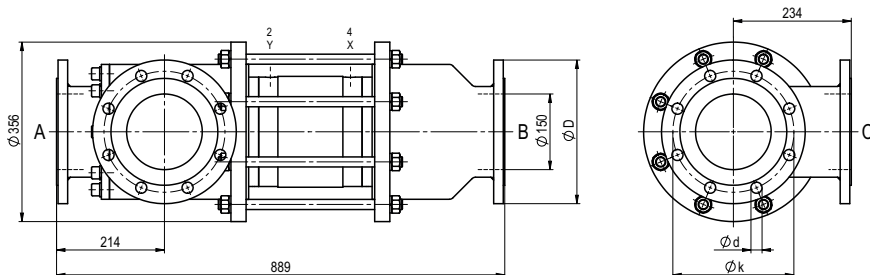
hydraulic specifications

bar	15-30 / 30-60	
	preferably 4/2 way control valve	
X/Y	G 1/4	NPT 1/4
		upon request

coax® data sheet - coaxial valve

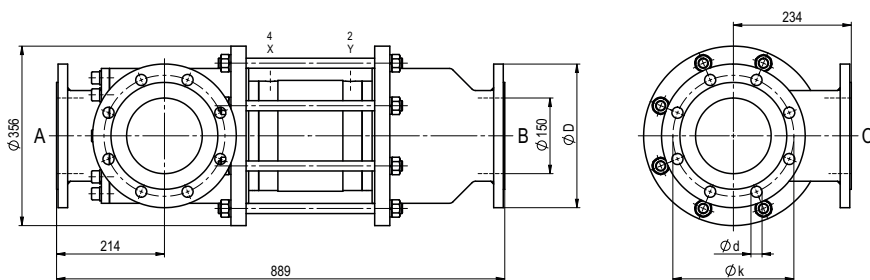
type VSV-F 150 DR

function: **NC**
closed when not energized (A ► B)



flanges PN	DIN	ØD	Øk	Ød
16	EN 1092-1	285	240	22

function: **NO**
open when not energized (A ► B)



pneumatic specifications

