

# pressure reduction valve

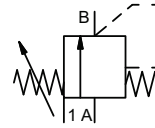
## type HPI 08


### 3-HPI 08

valve type with pilot valve



**control valve** manuel  
**pressure range** PN 0-200 bar  
**orifice** DN 8 mm  
**connection** thread  
**function** manual  
 stepless  
 pressure regulation



 Above stated body materials refer to the valve port connections that get in contact with the media only!

**design** externally controlled with spring return  
**body materials** ① brass ④  
 ② ⑤  
 ③ ⑥  
**valve seat** synthetic resin on metal  
**seal materials** NBR **FPM**

**details needed for main valve**

- orifice
- port
- pressure regulating range
- flow rate
- media
- media temperature
- ambient temperature

**details needed for pneumatic actuation**

- nominal voltage
- type of protection
- actuation pressure range min/max

**general specifications**

**options**

<b>ports</b>	HPI	threads G 3/8
<b>function</b>		stepless regulation
<b>pressure regulation range</b>	bar	10-200
<b>flow rate</b>	m <sup>3</sup> /h	max. 1,3
<b>media</b>		gaseous - liquid
<b>abrasive media</b>		
<b>flow direction</b>	A ⇌ B	as marked
<b>settling time</b>	ms	< 100
<b>media temperature</b>	°C	0 to +60
<b>ambient temperature</b>	°C	0 to +50
<b>approvals</b>		
<b>mounting</b>		
<b>weight</b>	kg	3,6
<b>additional equipment</b>		

**electrical specifications**


**options**


<b>nominal voltage</b>	U <sub>n</sub>	DC 24 V	special voltage upon request
	U <sub>n</sub>	AC 230 V 50 Hz	special voltage upon request
<b>power consumption</b>	DC	4,8 W	2,5 W
	AC	pick up 11,0 VA holding 8,5 VA	
<b>protection</b>	IP65 (P54)	acc. DIN 40050	
<b>energized duty rating</b>	ED	100%	
<b>connection</b>		plug acc. DIN EN 175301-803 form B, 3 positions x90° / wire diameter 6-8 mm	
<b>optional air</b>	M12x1	connector acc. DESINA	connector acc. VDMA
<b>additional equipment</b>		illuminated plug with varistor	
<b>max. temperature</b>	media	60°C	
	ambient	50°C	
<b>explosion proof</b>	E Ex e II T5	nominal voltage U <sub>n</sub>	DC 24 V 3,25 W
		power consumption	AC 230 V 50 Hz 2,90 W

**pneumatic specifications**

**options**

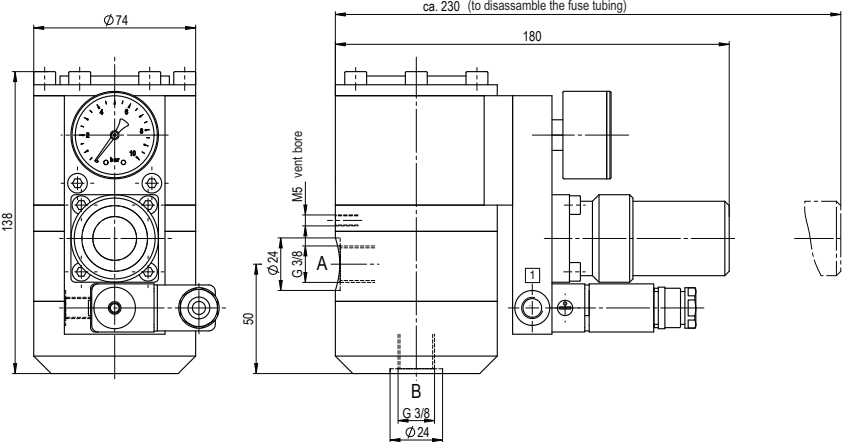
<b>actuation pressure range</b>	bar	see actuation pressure-diagram
<b>compressed air</b>		DIN ISO 8573-1 grade of compressed air quality 5/4/3
<b>control</b>		preferably 3/2 way pilot valve during low pressure circulation mode
<b>actuator ports</b>	1	G 1/8

 The valves' technical design is based on media and application requirements. This can lead to deviations from the general specifications shown on the data sheet with regards to the design, sealing materials and characteristics.

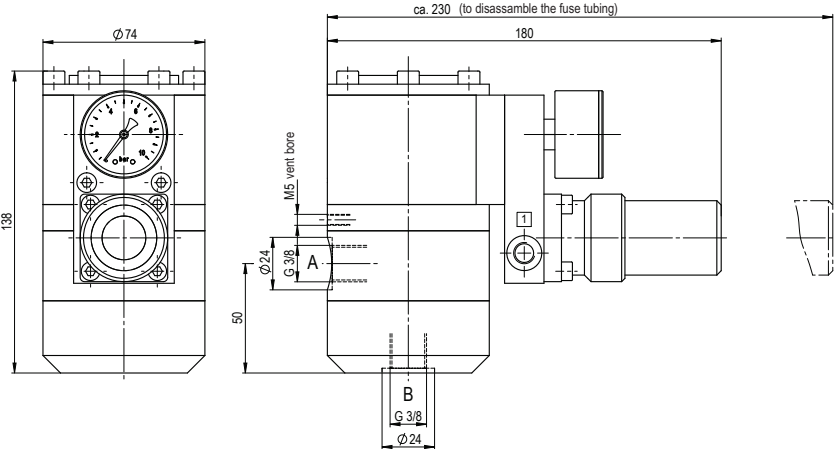
 If order or application specifications are incomplete or imprecise there exists a risk of an incorrect technical design of the valve for the required application. As a consequence, the physical and / or chemical properties of the materials or seals used, may not be suitable for the intended application.

■ specifications not highlighted are standard  
 ■ specifications highlighted in grey are optional

# type 3-HPI 08



# type HPI 08



## actuation pressure-diagram

