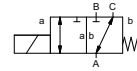


coaxial valve

type MK 20 DR TÜV FK 20 DR TÜV



3/2 way valve direct acting
pressure range PN 0-40 bar
orifice DN 20 mm
connection thread/flange
function valve normally closed (A ► B)
 symbol **NC**



Above stated body materials refer to the valve port connections that get in contact with the media only!

design pressure balanced, with spring return, switching overlap
body materials TÜV

valve seat synthetic resin on metal
seal materials FPM, PTFE

details needed

- orifice
- port
- function NC
- operating pressure
- inlet pressure at A, B or C
- flow rate
- media
- media temperature
- ambient temperature
- nominal voltage

general specifications

options

| | | |
|-----------------------------|---|----------------------------------|
| ports | MK | threads G 3/4 - G 1 1/4 |
| | FK | flanges PN 40 |
| function | NC | |
| pressure range | bar 0-40 | |
| | A ⇒ B max. 40 / B ⇒ A max. 16 / A ⇒ C max. 40 / C ⇒ A max. 40 | |
| Kv value | m³/h 6,7 | |
| vacuum | leak rate | |
| pressure-vacuum | P ₁ ⇔ P ₂ | |
| back pressure | P ₂ > P ₁ see pressure range | |
| media | liquid fuels | |
| abrasive media | | |
| damping | opening | |
| | closing | |
| flow direction | see pressure range | |
| switching cycles | 1/min | 150 |
| switching time | ms | opening 110 closing 110 |
| media temperature | °C DC: -10 to +140 | |
| | AC: -10 to +140 | |
| ambient temperature | °C DC: -10 to +60 | |
| | AC: -10 to +60 | |
| limit switches | | |
| manual override | | |
| approvals | TÜV | DIN EN ISO 23553-1 + E DIN 32725 |
| mounting | | |
| weight | kg | MK 6,0 FK 8,4 |
| additional equipment | | |

electrical specifications

options

| | | |
|--------------------------------------|----------------|---|
| nominal voltage | U _n | DC 24 V |
| | U _n | AC 230 V 40-60 Hz |
| actuation | DC | direct-current magnet |
| | AC | direct-current magnet with separate rectifier |
| insulating rating | H | 180°C |
| protection | IP65 | |
| energized duty rating | ED | 100% |
| connection | M16x1,5 | terminal box |
| optional additional equipment | | |
| current consumption | N-coil | |
| | H-coil | DC 24 V 2,26 A |
| | | AC 230 V 40-60 Hz 0,29 A |
| explosion proof | | |
| limit switches | mechanical | single pole double throw-SPDT |

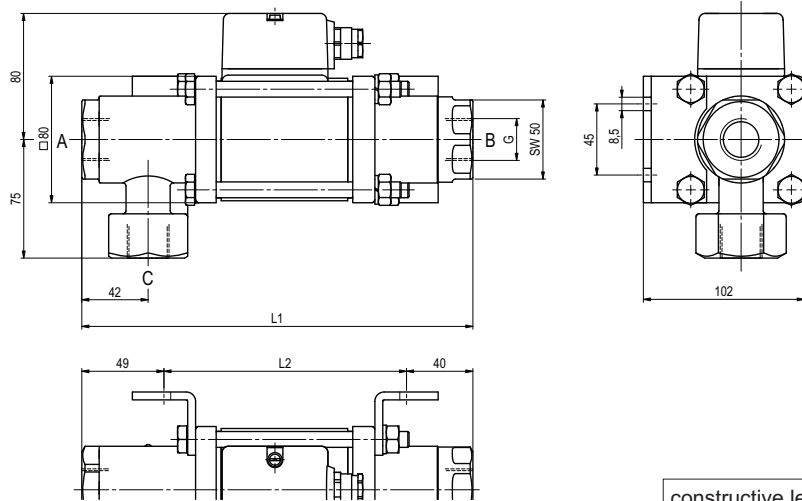
The valves' technical design is based on media and application requirements. This can lead to deviations from the general specifications shown on the data sheet with regards to the design, sealing materials and characteristics.

If order or application specifications are incomplete or imprecise there exists a risk of an incorrect technical design of the valve for the required application. As a consequence, the physical and / or chemical properties of the materials or seals used, may not be suitable for the intended application.

■ specifications not highlighted are standard
 ■ specifications highlighted in grey are optional

type MK 20 DR TÜV

function: **NC**
closed when not energized (A ► B)



| constructive length | L1 | L2 | L3 |
|--------------------------------|-----|-----|-----|
| standard | 247 | 158 | 301 |
| with mechanical limit switches | 267 | 178 | 321 |

type FK 20 DR TÜV

function: **NC**
closed when not energized (A ► B)

