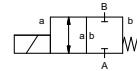


coaxial valve

type KB 15



2/2 way valve direct acting
pressure range PN 0-400 bar
orifice DN 2-8 mm
connection thread
function valve
 normally closed
 symbol **NC**



Above stated body materials refer to the valve port connections that get in contact with the media only!

design direct acting, with spring return
body materials ⑧ 1.4104/steel, nickel plated ②
 ③ ⑤
 ④ ⑥ stainless steel,
 steel, nickel plated
valve seat synthetic resin on metal
seal materials NBR, PTFE **FPM**

details needed

- orifice
- port
- function NC
- operating pressure
- flow rate
- media
- media temperature
- ambient temperature
- nominal voltage

general specifications

options

ports	KB	threads G 3/8	special threads
function	NC (1-coil operation)		NC (2-coil operation)
pressure range	bar	30 50 80 120 250 300	40 70 100 150 300 400
	DN	8 6 5 4 3 2	8 6 5 4 3 2
Kv value	l/min	24,0 17,4 13,5 11,0 4,1 1,7	24,0 17,4 13,5 1,0 4,1 1,7
vacuum	leak rate	< 10 ⁻⁶ mbar·l·s ⁻¹	
pressure-vacuum	P ₁ ⇔ P ₂	upon request	
back pressure	P ₂ > P ₁	upon request	
media	gaseous - liquid		
abrasive media			
damping	opening		
	closing		
flow direction	A ⇔ B	as marked	bi-directional upon request
switching cycles	1/min	260	370
switching time	ms	opening 60 closing 170	opening 40 closing 120
media temperature	°C	DC: -20 to +100 AC: -20 to +100	<-40 °C / -196 °C and >100 °C upon request <-40 °C / -196 °C and >100 °C upon request
ambient temperature	°C	DC: -20 to +80 AC: -20 to +80	
limit switches			
manual override			
approvals	WAZ		
mounting			
weight	kg	2,5	
additional equipment	upon request		

electrical specifications

options

nominal voltage	U _n	DC 24 V	special voltage upon request
	U _n	AC 230 V 40-60 Hz	special voltage upon request
actuation	DC	direct-current magnet	
	AC	direct-current magnet with integrated rectifier	above 100 °C with separate rectifier
insulating rating	H	180°C	
protection	IP65		
energized duty rating	ED	100%	
connection	M12x1	plug acc. DIN EN 175301-803 form A, 4 positions x90° / wire diameter 6-8 mm	terminal box M16x1,5
optional additional equipment		connector acc. DESINA	connector acc. VDMA
current consumption		illuminated plug with varistor	
	1-coil operation	DC 24 V 1,60 A AC 230 V 40-60 Hz 0,15 A	DC 24 V 2,30 A AC 230 V 40-60 Hz 0,24 A
	2-coil operation	pick up power holding power	DC 24 V 5,90 A / AC 230 V 0,76A DC 24 V 1,58 A / AC 230 V 0,16A
explosion proof			
limit switches			

The valves' technical design is based on media and application requirements. This can lead to deviations from the general specifications shown on the data sheet with regards to the design, sealing materials and characteristics.

If order or application specifications are incomplete or imprecise there exists a risk of an incorrect technical design of the valve for the required application. As a consequence, the physical and / or chemical properties of the materials or seals used, may not be suitable for the intended application.

■ specifications not highlighted are standard
 ■ specifications highlighted in grey are optional

type **KB 15**

function: **NC**
closed when not energized

