

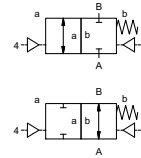
lateral valve type PCD-3 10

5-PCD-3 10

valve type with pilot valve



2/2 way valve externally controlled
pressure range PN 0-200 bar
orifice DN 10 mm
connection thread/cartridge
function valve normally closed
 symbol **NC**
 valve normally open
 symbol **NO**



Above stated body materials refer to the valve port connections that get in contact with the media only!

design externally controlled with spring return
body materials ① aluminium ③
 ① ④
 ② ⑥ stainless steel
valve seat seal materials synthetic resin on metal metal on metal
 PU, NBR PTFE, PE, FPM, EPDM

details needed for main valve

- orifice
- port
- function NC/NO
- operating pressure/Δp
- flow rate
- media
- media temperature
- ambient temperature
- type of actuation

details needed for pneumatic actuation

- nominal voltage
- type of protection
- actuation pressure range min/max
- low wattage coil, actuation pressure range 4-7 bar
- pilot valve type

details needed for hydraulic actuation

- actuation pressure range min/max
- hydraulic control valve function

The valves' technical design is based on media and application requirements. This can lead to deviations from the general specifications shown on the data sheet with regards to the design, sealing materials and characteristics.

If order or application specifications are incomplete or imprecise there exists a risk of an incorrect technical design of the valve for the required application. As a consequence, the physical and / or chemical properties of the materials or seals used, may not be suitable for the intended application.

general specifications

ports	PCD-3	without valve body	with valve body thread G 3/8
function	NC		NO
pressure range	bar	0-150 (0-200 see pressure diagram)	NO (see pressure diagram)
Kv value	m ³ /h	3,0	
vacuum			< 10 ⁻⁶ mbar·l·s ⁻¹
pressure-vacuum	P ₁ ↔ P ₂		upon request
back pressure	P ₂ > P ₁		upon request
media		gaseous - liquid - highly viscous - gelatinous - pasty	
abrasive media			
damping	opening	by throttles on pilot valve	
flow direction	A ↔ B	as marked	bi-directional upon request
switching cycles	1/min	700	
switching time	ms	opening 30-3000	closing 30-3000
media temperature	°C	direct mounted pilot valve 60	remote mounted pilot valve outside
ambient temperature	°C	direct mounted pilot valve 50	temperatur range of media max. 150 °C
flush ports			
leak ports			available
limit switches			inductive
manual override		via pilot valve	
approvals			WAZ
mounting			mounting holes on valve body 2 x M6
weight	kg	PCD-3 1,3	PCD-3 1,9
additional equipment			valve body

electrical specifications

nominal voltage	U _n	DC 24 V	special voltage upon request
power consumption	U _n	AC 230 V 50 Hz	special voltage upon request
protection	DC	4,8 W	2,5 W
energized duty rating	AC	pick up 11,0 VA holding 8,5 VA	
connection	IP65 (P54)	acc. DIN 40050	
optional	ED	100%	
additional equipment		plug acc. DIN EN 175301-803 form B, 4 positions x90° / wire diameter 6-8 mm	
max. temperature	M12x1	connector acc. DESINA	connector acc. VDMA
explosion proof		illuminated plug with varistor	
	media	60°C	
	ambient	50°C	
	E Ex e II T5	nominal voltage U _n	DC 24 V 3,25 W
		power consumption	AC 230 V 50 Hz 2,90 W

pneumatic specifications

actuation pressure range	bar	4-10	
air consumption	cm ³ /stroke	PCD-3 27	
cycle speed		main valve speed variable by throttleson pilot valve	
control		preferably 5/2 way pilot valve	
pilot valve interface			
actuator ports	2/4	G 1/8	

hydraulic specifications

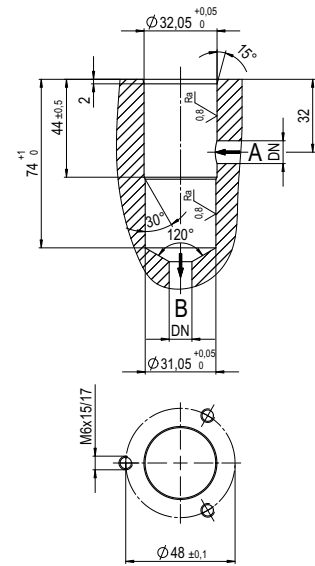
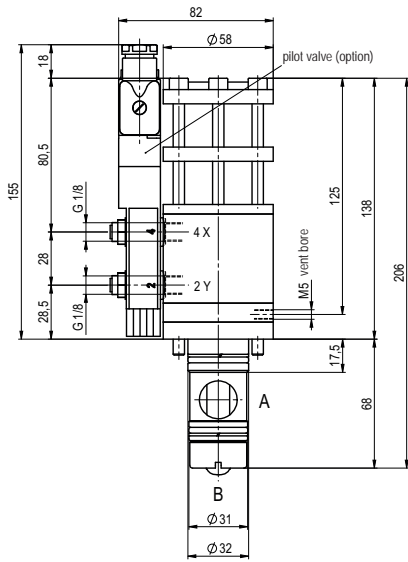
actuation pressure range	bar	10-30	> 30 bar upon request
control		preferably 4/2 way control valve	
actuator ports	X/Y	G 1/4 via adapter	NPT 1/4 via adapter
by media			

■ specifications not highlighted are standard
 ■ specifications highlighted in grey are optional

type PCD-3 10

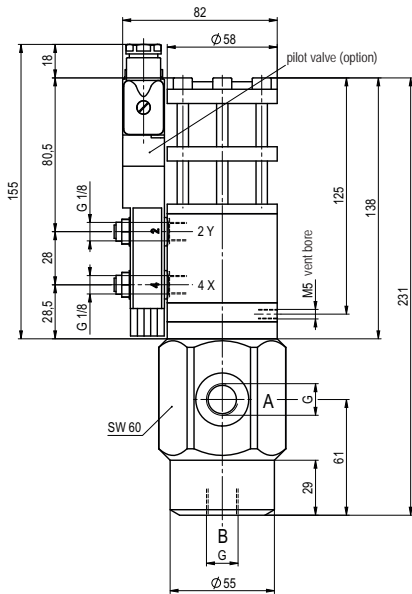
function: **NC**
closed when not energized

drilling design for cartridge

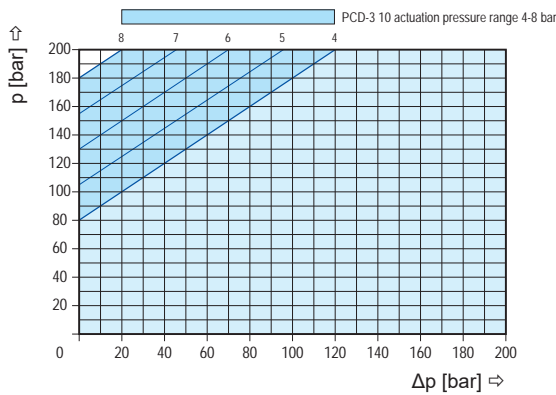


type PCD-3 10

function: **NO**
open when not energized



pressure-diagram



pneumatic specifications

