

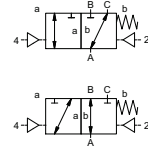
lateral valve type PCD-H 10 DR

5-PCD-H 10 DR

valve type with pilot valve



3/2 way valve externally controlled
pressure range PN 0-500 bar
orifice DN 10 mm
connection thread
function valve normally closed (A ► B)
 symbol **NC**
 valve normally open (A ► B)
 symbol **NO**



Above stated body materials refer to the valve port connections that get in contact with the media only!

design pressure balanced, with spring return, switching overlap

body materials ① brass ③
 ③ ⑤
 ④ ⑥ stainless steel

valve seat synthetic resin on metal
seal materials NBR PTFE, FPM, CR, EPDM

details needed for main valve

- orifice
- port
- function NC/NO
- operating pressure/Δp
- inlet pressure at A, B or C
- flow rate
- media
- media temperature
- ambient temperature
- type of actuation

details needed for pneumatic actuation

- nominal voltage
- type of protection
- actuation pressure range min/max
- low wattage coil, actuation pressure range 4-7 bar
- pilot valve type

The valves' technical design is based on media and application requirements. This can lead to deviations from the general specifications shown on the data sheet with regards to the design, sealing materials and characteristics.

If order or application specifications are incomplete or imprecise there exists a risk of an incorrect technical design of the valve for the required application. As a consequence, the physical and / or chemical properties of the materials or seals used, may not be suitable for the intended application.

■ specifications not highlighted are standard
 specifications highlighted in grey are optional

general specifications

ports	PCD-H	threads G 3/8
function	NC	NO
pressure range	bar	0-500
Kv value	m ³ /h	1,5
vacuum	leak rate	
pressure-vacuum	P ₁ ↔ P ₂	
back pressure	P ₂ > P ₁	
media	gaseous - liquid	
abrasive media		
damping	opening	
	closing	
flow direction	see pressure range	
switching cycles	1/min	130
switching time	ms	opening 30-3000 closing 30-3000
media temperature	°C	direct mounted pilot valve 60 remote mounted pilot valve outside temper-
ambient temperature	°C	direct mounted pilot valve 50 ratur range of media max. 150 °C
flush ports		
leak ports		
limit switches	inductive	
manual override		
approvals		
mounting		
weight	kg	9,0
additional equipment		

options

electrical specifications

nominal voltage	U _n	DC 24 V	special voltage upon request
	U _n	AC 230 V 50 Hz	special voltage upon request
power consumption	DC	4,8 W	2,5 W
	AC	pick up 11,0 VA holding 8,5 VA	
protection	IP65 (P54)	acc. DIN 40050	
energized duty rating	ED	100%	
connection	optional	plug acc. DIN EN 175301-803 form B, 4 positions x90° / wire diameter 6-8 mm	
additional equipment	M12x1	connector acc. DESINA	connector acc. VDMA
max. temperature	media	illuminated plug with varistor	
	ambient	60°C	
explosion proof	E Ex e II T5	nominal voltage U _n	DC 24 V 3,25 W
		power consumption	AC 230 V 50 Hz 2,90 W

options

pneumatic specifications

actuation pressure range	bar	4-10
air consumption	cm ³ /stroke	7
cycle speed	main valve speed variable by throttleson pilot valve	
control	preferably 5/2 way pilot valve	
pilot valve interface		
actuator ports	2/4	G 1/8

options

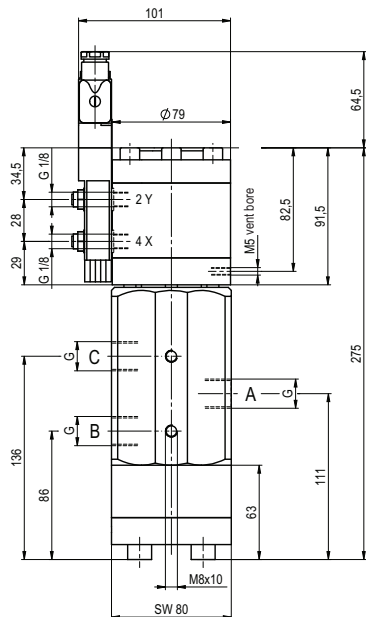
hydraulic specifications

actuation pressure range		
control		
actuator ports		
by media		

options

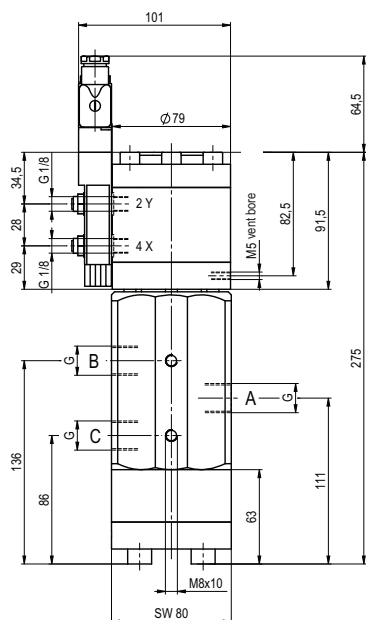
type PCD-H 10 DR

function: **NC**
closed when not energized (A ► B)

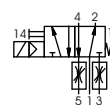


type PCD-H 10 DR

function: **NO**
open when not energized (A ► B)



pneumatic actuation



5/2 way pilot valve
flow rate 350 l/min
pressure range 3-10 bar G 1/8