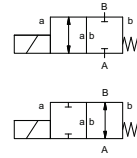


lateral valve type RSV 32



2/2 way valve direct acting
pressure range PN 0-10 bar
orifice DN 32 mm
connection thread
function valve normally closed
 symbol **NC**
 valve normally open
 symbol **NO**



⚠ Above stated body materials refer to the valve port connections that get in contact with the media only!

design pressure balanced, with spring return
body materials ① brass
 ③ brass, nickel plated

valve seat seal materials synthetic resin on metal
 NBR **FPM**

details needed

- orifice
- port
- function NC/NO
- operating pressure
- flow rate
- media
- media temperature
- ambient temperature
- nominal voltage

general specifications

options

ports	RSV	threads G 1 1/4 - G 1 1/2
function	NC	NO
pressure range	bar	0-10
Kv value	m ³ /h	8,2
vacuum		low vacuum
pressure-vacuum	P ₁ ↔ P ₂	upon request
back pressure	P ₂ > P ₁	
media		gaseous - liquid
abrasive media		
damping	opening	
	closing	
flow direction	A ↔ B	as marked
switching cycles	1/min	110
switching time	ms	opening 140 closing 250
media temperature	°C	DC: -10 to +80 AC: -10 to +80
ambient temperature	°C	DC: -10 to +80 AC: -10 to +80
limit switches		
manual override		
approvals		
mounting		mounting bracket / mounting holes
weight	kg	4,5
additional equipment		upon request

electrical specifications

options

nominal voltage	U _n	DC 24 V	special voltage upon request
	U _n	AC 230 V 40-60 Hz	special voltage upon request
actuation	DC	direct-current magnet	
	AC	direct-current magnet with integrated rectifier	
insulating rating	H	180°C	
protection	IP65		
energized duty rating	ED	100%	
connection		plug acc. DIN EN 175301-803 form A, 4 positions x90° / wire diameter 6-8 mm	terminal box M16x1,5
optional additional equipment		iluminated plug with varistor	
current consumption	N-coil	DC 24 V 1,70 A	
		AC 230 V 40-60 Hz 0,16 A	
explosion proof			
limit switches			

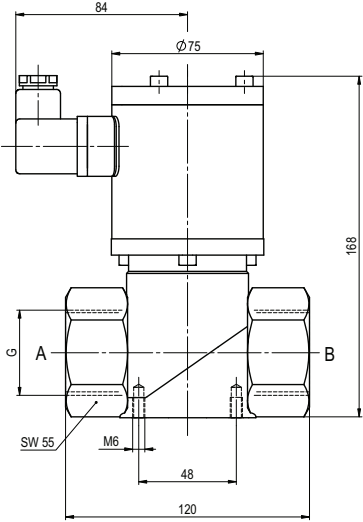
⚠ The valves' technical design is based on media and application requirements. This can lead to deviations from the general specifications shown on the data sheet with regards to the design, sealing materials and characteristics.

⚠ If order or application specifications are incomplete or imprecise there exists a risk of an incorrect technical design of the valve for the required application. As a consequence, the physical and / or chemical properties of the materials or seals used, may not be suitable for the intended application.

■ specifications not highlighted are standard
 ■ specifications highlighted in grey are optional

Type RSV 32

function: **NC**
closed when not energized



Type RSV 32

function: **NO**
open when not energized

