

coaxial valve

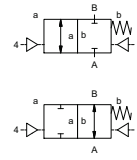
type VSV-F 100

5-VSV-F 100

valve type with pilot valve



2/2 way valve externally controlled
pressure range PN 0-40 bar
orifice DN 100 mm
connection flange
function valve normally closed
 symbol **NC**
 valve normally open
 symbol **NO**



Above stated body materials refer to the valve port connections that get in contact with the media only!

design pressure balanced, with spring return
body materials ① aluminium ② steel, galvanized
 ③ ⑤ without non-ferr. metals
 ④ steel, nickel plated ⑥ stainless steel
valve seat synthetic resin on metal
seal materials NBR PTFE, FPM, CR, EPDM

details needed for main valve

- orifice
- port
- function NC/NO
- operating pressure
- flow rate
- media
- media temperature
- ambient temperature
- type of actuation

details needed for pneumatic actuation

- nominal voltage
- type of protection
- actuation pressure range min/max
- low wattage coil, actuation pressure range 4-7 bar
- pilot valve type

details needed for hydraulic actuation

- actuation pressure range min/max
- hydraulic control valve function

The valves' technical design is based on media and application requirements. This can lead to deviations from the general specifications shown on the data sheet with regards to the design, sealing materials and characteristics.

If order or application specifications are incomplete or imprecise there exists a risk of an incorrect technical design of the valve for the required application. As a consequence, the physical and / or chemical properties of the materials or seals used, may not be suitable for the intended application.

■ specifications not highlighted are standard
 ■ specifications highlighted in grey are optional

general specifications

ports	VSV-F	flanges PN 16 / 40	special flanges
function		NC	NO
pressure range	bar	0-16 / 0-40	
Kv value	m ³ /h	140,0	
vacuum	leak rate		< 10 ⁻⁶ mbar·l·s ⁻¹
pressure-vacuum	P ₁ ↔ P ₂		pressure side max. 40 bar vacuum side leak rate upon request
back pressure	P ₂ > P ₁		available (max. 16 bar)
media		gaseous - liquid - highly viscous - gelatinous - pasty - contaminated	
abrasive media			version available
damping	opening		
	closing	by throttles on pilot valve	
flow direction	A ↔ B	as marked	bi-directional upon request
switching cycles	1/min	40	
switching time	ms	opening 300-3000 closing 300-3000	
media temperature	°C	direct mounted pilot valve 60	remote mounted pilot valve outside temper.
ambient temperature	°C	direct mounted pilot valve 50	atur range of media max. 160 °C
flush ports			available
leak ports			available
limit switches			inductive / mechanical upon request
manual override		via pilot valve	
approvals			LR/GL/WAZ
mounting			
weight	kg	VSV-F 38,0	
additional equipment			upon request

electrical specifications

nominal voltage	U _n	DC 24 V	special voltage upon request
	U _n	AC 230 V 50 Hz	special voltage upon request
power consumption	DC	4,8 W	2,5 W
	AC	pick up 11,0 VA holding 8,5 VA	
protection	IP65 (P54)	acc. DIN 40050	
energized duty rating	ED	100%	
connection		plug acc. DIN EN 175301-803 form B, 4 positions x90° / wire diameter 6-8 mm	
optional	M12x1	connector acc. DESINA	connector acc. VDMA
additional equipment		illuminated plug with varistor	
max. temperature	media	60°C	
	ambient	50°C	
explosion proof	E Ex e II T5	nominal voltage U _n	DC 24 V 3,25 W
		power consumption	AC 230 V 50 Hz 2,90 W

pneumatic specifications

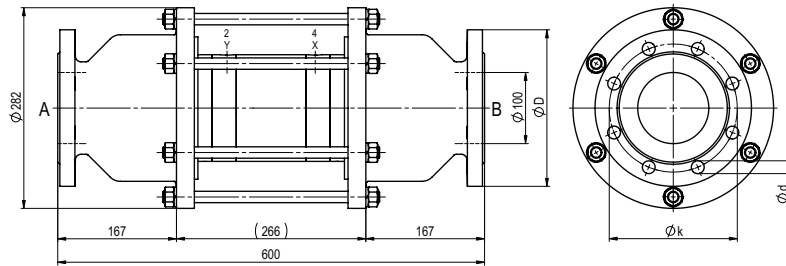
actuation pressure range	bar	4-10	
air consumption	cm ³ /stroke	135	
cycle speed		main valve speed variable by throttleson pilot valve	
control		preferably 5/2 way pilot valve	
pilot valve interface			
actuator ports	2/4	G 1/4	G 3/8

hydraulic specifications

actuation pressure range	bar	10-30 / 30-60	
control		preferably 4/2 way control valve	
actuator ports	X/Y	G 1/4	NPT 1/4
by media			upon request

type VSV-F 100

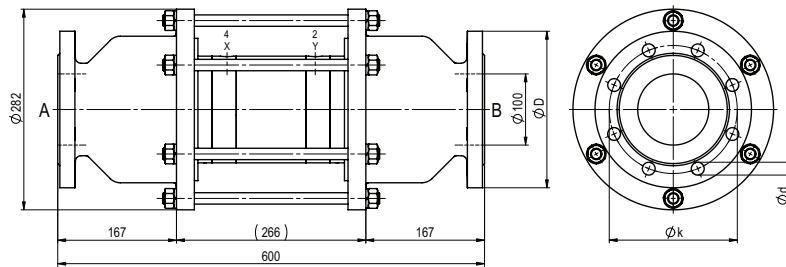
function: **NC**
closed when not energized



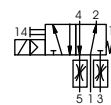
flanges PN	DIN	ØD	Øk	Ød
16	EN 1092-1	220	180	18
40	EN 1092-1	235	190	22

type VSV-F 100

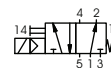
function: **NO**
open when not energized



pneumatic actuation



5/2 way pilot valve
flow rate 700 l/min
pressure range 3-10 bar G 1/8



5/2 way pilot valve ISO 1
flow rate 700 l/min
pressure range 3-10 bar G 1/4