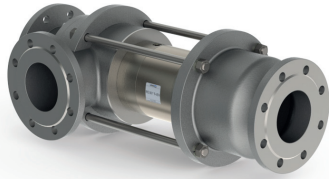


coaxial valve

type VSV-F 100 DR

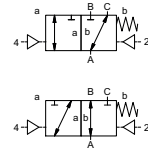
5-VSV-F 100 DR

valve type with pilot valve



3/2 way valve externally controlled
pressure range PN 0-40 bar
orifice DN 100 mm
connection flange
function valve normally closed (A ► B)
 symbol **NC**

valve normally open (A ► B)
 symbol **NO**



Above stated body materials refer to the valve port connections that get in contact with the media only!

design pressure balanced, with spring return, intersecting switch-over

body materials ① ② steel galvanized
 ③ ⑤ without non-ferr. Metals
 ④ steel, nickel plated ⑥ stainless steel

valve seat seal materials synthetic resin on metal
 NBR PTFE, FPM, CR, EPDM

details needed for main valve

- orifice
- port
- function NC/NO
- operating pressure
- inlet pressure at A, B or C
- flow rate
- media
- media temperature
- ambient temperature
- type of actuation

details needed for pneumatic actuation

- nominal voltage
- type of protection
- actuation pressure range min/max
- low wattage coil, actuation pressure range 4-7 bar
- pilot valve type

details needed for hydraulic actuation

- actuation pressure range min/max
- hydraulic control valve function

The valves' technical design is based on media and application requirements. This can lead to deviations from the general specifications shown on the data sheet with regards to the design, sealing materials and characteristics.

If order or application specifications are incomplete or imprecise there exists a risk of an incorrect technical design of the valve for the required application. As a consequence, the physical and / or chemical properties of the materials or seals used, may not be suitable for the intended application.

general specifications

ports	VSV-F	flanges PN 16 / 40	options	special flanges
function		NC		NO
pressure range	bar	0-16 / 0-40		
		A ⇒ B max. 40 / B ⇒ A max. 16 / A ⇒ C max. 40 / C ⇒ A max. 40		
Kv value	m³/h	140,0		
vacuum	leak rate			≤ 10 ⁻⁶ mbar·l·s ⁻¹
pressure-vacuum	P ₁ ⇔ P ₂			pressure side max. 40 bar vacuum side leak rate upon request
back pressure	P ₂ > P ₁	see pressure range		
media		gaseous - liquid - highly viscous - gelatinous - pasty - contaminated		
abrasive media				available
damping	opening			
	closing	by throttles on pilot valve		
flow direction		see pressure range		
switching cycles	1/min	40		
switching time	ms	opening 300-3000 closing 300-3000		
media temperature	°C	direct mounted pilot valve 60		remote mounted pilot valve outside temperature range of media max. 160 °C
ambient temperature	°C	direct mounted pilot valve 50		
flush ports				available
leak ports				available
limit switches				inductive / mechanical upon request
manual override		via pilot valve		
approvals				LR/GL/WAZ
mounting				
weight	kg	VSV-F 46,5		
additional equipment				upon request

electrical specifications

nominal voltage	U _n	DC 24 V	options	special voltage upon request
	U _n	AC 230 V 50 Hz		special voltage upon request
power consumption	DC	4,8 W		2,5 W
	AC	pick up 11,0 VA holding 8,5 VA		
protection	IP65 (P54)	acc. DIN 40050		
energized duty rating	ED	100%		
connection		plug acc. DIN EN 175301-803 form B, 4 positions x90° / wire diameter 6-8 mm		
optional	M12x1	connector acc. DESINA		connector acc. VDMA
additional equipment		illuminated plug with varistor		
max. temperature	media	60°C		
	ambient	50°C		
explosion proof	E Ex e II T5	nominal voltage U _n	DC 24 V	3,25 W
		power consumption	AC 230 V 50 Hz	2,90 W

pneumatic specifications

actuation pressure range	bar	4-10	options	
air consumption	cm³/stroke	135		
cycle speed		main valve speed variable by throttles on pilot valve		
control		preferably 5/2 way pilot valve		
pilot valve interface	2/4	G 1/4		G 3/8
actuator ports				

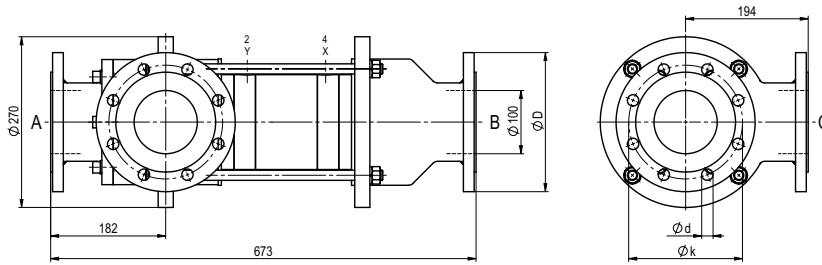
hydraulic specifications

actuation pressure range	bar	15-30 / 30-60	options	
control		preferably 4/2 way control valve		
actuator ports	X/Y	G 1/4		NPT 1/4
by media				upon request

■ specifications not highlighted are standard
 ■ specifications highlighted in grey are optional

type VSV-F 100 DR

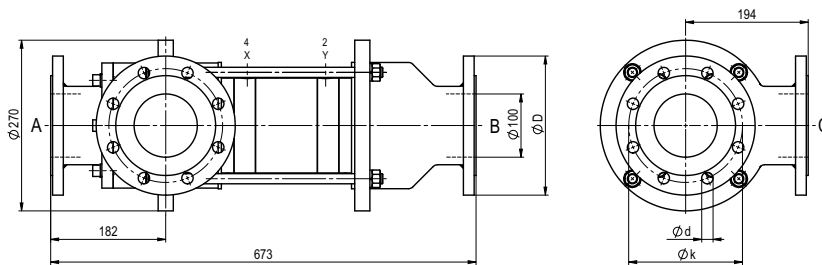
function: **NC**
closed when not energized (A ► B)



flanges PN	DIN	$\varnothing D$	$\varnothing k$	$\varnothing d$
16	EN 1092-1	220	180	18
40	EN 1092-1	235	190	22

type VSV-F 100 DR

function: **NO**
open when not energized (A ► B)



pneumatic specifications

