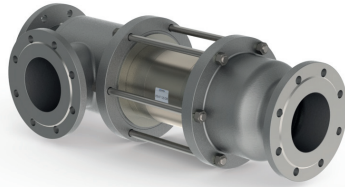


coaxial valve

type VSV-F 125 DR

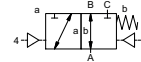
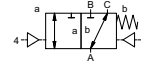
5-VSV-F 125 DR

valve type with pilot valve



3/2 way valve externally controlled
pressure range PN 0-16 bar
orifice DN 125 mm
connection flange
function valve normally closed (A ► B)
 symbol **NC**

valve normally open (A ► B)
 symbol **NO**



Above stated body materials refer to the valve port connections that get in contact with the media only!

design pressure balanced, with spring return, intersecting switch-over

body materials ① ② steel galvanized
 ③ ⑤ without non-ferr. Metals
 ④ steel, nickel plated ⑥ stainless steel

valve seat seal materials synthetic resin on metal
 NBR PTFE, FPM, CR, EPDM

details needed for main valve

- orifice
- port
- function NC/NO
- operating pressure
- inlet pressure at A, B or C
- flow rate
- media
- media temperature
- ambient temperature
- type of actuation

details needed for pneumatic actuation

- nominal voltage
- type of protection
- actuation pressure range min/max
- low wattage coil, actuation pressure range 4-7 bar
- pilot valve type

details needed for hydraulic actuation

- actuation pressure range min/max
- hydraulic control valve function

The valves' technical design is based on media and application requirements. This can lead to deviations from the general specifications shown on the data sheet with regards to the design, sealing materials and characteristics.

If order or application specifications are incomplete or imprecise there exists a risk of an incorrect technical design of the valve for the required application. As a consequence, the physical and / or chemical properties of the materials or seals used, may not be suitable for the intended application.

■ specifications not highlighted are standard
 ■ specifications highlighted in grey are optional

general specifications

ports	VSV-F	flanges PN 16	special flanges
function		NC	NO
pressure range	bar	0-16	
		A ⇌ B max. 16 / B ⇌ A max. 16 / A ⇌ C max. 16 / C ⇌ A max. 16	
Kv value	m³/h	198,0	
vacuum	leak rate		≤ 10 ⁻⁶ mbar·l·s ⁻¹
pressure-vacuum	P ₁ ⇌ P ₂		pressure side max. 16 bar vacuum side leak rate upon request
back pressure	P ₂ > P ₁	see pressure range	
media		gaseous - liquid - highly viscous - gelatinous - pasty - contaminated	
abrasive media			available
damping	opening		
	closing	by throttles on pilot valve	
flow direction		see pressure range	
switching cycles	1/min	30	
switching time	ms	opening 400-3000 closing 400-3000	
media temperature	°C	direct mounted pilot valve 60	remote mounted pilot valve outside temperature range of media max. 160 °C
ambient temperature	°C	direct mounted pilot valve 50	
flush ports			available
leak ports			available
limit switches			inductive / mechanical upon request
manual override		via pilot valve	
approvals			LR/GL/WAZ
mounting			
weight	kg	VSV-F 68,5	
additional equipment			upon request

electrical specifications

nominal voltage	U _n	DC 24 V	special voltage upon request
	U _n	AC 230 V 50 Hz	special voltage upon request
power consumption	DC	4,8 W	2,5 W
	AC	pick up 11,0 VA holding 8,5 VA	
protection	IP65 (P54)	acc. DIN 40050	
energized duty rating	ED	100%	
connection		plug acc. DIN EN 175301-803 form B, 4 positions x90° / wire diameter 6-8 mm	
optional	M12x1	connector acc. DESINA	connector acc. VDMA
additional equipment		illuminated plug with varistor	
max. temperature	media	60°C	
	ambient	50°C	
explosion proof	E Ex e II T5	nominal voltage U _n	DC 24 V 3,25 W
		power consumption	AC 230 V 50 Hz 2,90 W

pneumatic specifications

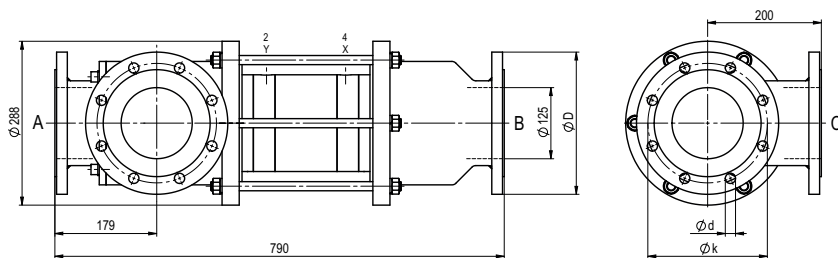
actuation pressure range	bar	4-10	
air consumption	cm³/stroke	275	
cycle speed		main valve speed variable by throttles on pilot valve	
control		preferably 5/2 way pilot valve	
pilot valve interface	2/4	G 1/4	G 3/8
actuator ports			

hydraulic specifications

actuation pressure range	bar	15-30 / 30-60	
control		preferably 4/2 way control valve	
actuator ports	X/Y	G 1/4	NPT 1/4
by media			upon request

type VSV-F 125 DR

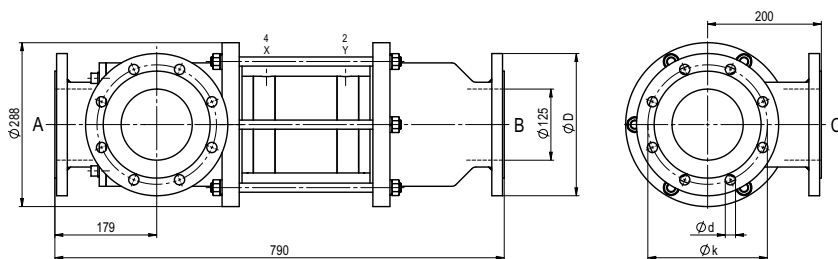
function: **NC**
closed when not energized (A ► B)



flanges PN	DIN	$\varnothing D$	$\varnothing k$	$\varnothing d$
16	EN 1092-1	250	210	18

type VSV-F 125 DR

function: **NO**
open when not energized (A ► B)



pneumatic specifications

