

Operating instructions for automatic shut-off valves for gaseous fuels as equipment with safety function

Scope of application:

These operating instructions are a supplement to the "general operating instructions" and also apply to the DIN EN 16678:2024-02 type-tested valves. The general operating instructions can be found on the Internet at www.co-ax.com and must also be observed when installing the valves !

Manufacturer and service address:

müller co-ax gmbh Fon: 07947-828-0
 Friedrich-Müller-Straße 1 Fax: 07947-828-11
 D-74670 Forchtenberg e-mail: info@co-ax.com Internet: www.co-ax.com

Product type: Gas armatures, 2/2-way shut-off valves with electromagnetic actuator, de-energised, closed by spring force

Type designations / technical and electrical data:

Designation	Certificate Number	Class	Technical data					Electrical data		
			Nominal pressure	Nominal width	Temperature range	Operating pressure	Mounting position	Voltages	Nominal frequency	Protection class
MK 15 NC (E/2E) FK 15 NC (E/2E)	Z-IS-TAF-MUC-24-07- 2652116-05080516	A A	PN 40 bar PN 40 bar	DN 15 DN 15	-15 °C to +80 °C -15 °C to +80 °C	max. 40 bar max. 40 bar	any any	24, 48, 60, 98, 110, 125, 200, or 220 VDC / 110, 230, 240 VAC	40 - 60 Hz	IP 65
MK 15 NC - Hd (E/2E) FK 15 NC - Hd (E/2E)	Z-IS-TAF-MUC-24-07- 2652116-05080516	A A	PN 40 bar PN 40 bar	DN 15 DN 15	-15 °C to +80 °C -15 °C to +80 °C	max. 40 bar max. 40 bar	any any	24, 48, 60, 98, 110, 125, 200, or 220 VDC / 110, 230, 240 VAC	40 - 60 Hz	IP 65
MK 15 NC - Ex (E/2E) FK 15 NC - Ex (E/2E)	Z-IS-TAF-MUC-24-07- 2652116-05075524	A A	PN 40 bar PN 40 bar	DN 15 DN 15	-15 °C to +40 °C -15 °C to +40 °C	max. 16 bar max. 16 bar	any any	24, 48, 98, 110, 200, 220 VDC	40 - 60 Hz	Ex II 2 G Ex mb e II T4 bzw. Ex II 2 G Ex mb II T4 Ex II 2 D Ex tD A21 IP65 T130 °C
MK 15 NC - Ex Hd (E/2E) FK 15 NC - Ex Hd (E/2E)	Z-IS-TAF-MUC-24-07- 2652116-05075524	A A	PN 40 bar PN 40 bar	DN 15 DN 15	-15 °C to +40 °C -15 °C to +40 °C	max. 16 bar max. 16 bar	any any	24, 48, 98, 110, 200, 220 VDC	40 - 60 Hz	Ex II 2 G Ex mb e II T4 bzw. Ex II 2 G Ex mb II T4 Ex II 2 D Ex tD A21 IP65 T130 °C
MK 20 NC (E/2E) FK 20 NC (E/2E)	Z-IS-TAF-MUC-24-07- 2652116-05080516	A A	PN 40 bar PN 40 bar	DN 20 DN 20	-15 °C to +80 °C -15 °C to +80 °C	max. 40 bar max. 40 bar	any any	24, 48, 60, 98, 110, 125, 200, or 220 VDC / 110, 230, 240 VAC	40 - 60 Hz	IP 65
MK 20 NC - Hd (E/2E) FK 20 NC - Hd (E/2E)	Z-IS-TAF-MUC-24-07- 2652116-05080516	A A	PN 40 bar PN 40 bar	DN 20 DN 20	-15 °C to +80 °C -15 °C to +80 °C	max. 40 bar max. 40 bar	any any	24, 48, 60, 98, 110, 125, 200, or 220 VDC / 110, 230, 240 VAC	40 - 60 Hz	IP 65
MK 20 NC - Ex (E/2E) FK 20 NC - Ex (E/2E)	Z-IS-TAF-MUC-24-07- 2652116-05075524	A A	PN 40 bar PN 40 bar	DN 20 DN 20	-15 °C to +40 °C -15 °C to +40 °C	max. 16 bar max. 16 bar	any any	24, 48, 98, 110, 200 oder 220 VDC	40 - 60 Hz	Ex II 2 G Ex mb e II T4 Ex II 2 D Ex tD A21 IP65 T130 °C
MK 20 NC - Ex Hd (E/2E) FK 20 NC - Ex Hd (E/2E)	Z-IS-TAF-MUC-24-07- 2652116-05075524	A A	PN 40 bar PN 40 bar	DN 20 DN 20	-15 °C to +40 °C -15 °C to +40 °C	max. 16 bar max. 16 bar	any any	24, 48, 98, 110, 200 oder 220 VDC	40 - 60 Hz	Ex II 2 G Ex mb e II T4 Ex II 2 D Ex tD A21 IP65 T130 °C
MK 25 NC (E/2E) FK 25 NC (E/2E)	Z-IS-TAF-MUC-24-07- 2652116-05080516	A A	PN 40 bar PN 40 bar	DN 25 DN 25	-15 °C to +80 °C -15 °C to +80 °C	max. 40 bar max. 40 bar	any any	24, 48, 60, 98, 110, 125, 200, 210 or 220 VDC, / 110, 230, 240 VAC	40 - 60 Hz	IP 65
MK 25 NC - Ex (E/2E) FK 25 NC - Ex (E/2E)	Z-IS-TAF-MUC-24-07- 2652116-05075524	A A	PN 40 bar PN 40 bar	DN 25 DN 25	-15 °C to +40 °C -15 °C to +40 °C	max. 16 bar max. 16 bar	any any	24, 48, 98, 110, 200 oder 220 VDC	40 - 60 Hz	Ex II 2 G Ex mb e II T4 Ex II 2 D Ex tD A21 IP65 T130 °C

Explanations:

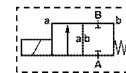
MK: Connections with female thread
 FK: Connection with flange
 15: Nominal width, DN 15 mm
 NC: Valve closed without tension by spring force
 Hd: manual emergency actuation
 Ex: Explosion-protected version
 E: Version with 1 proximity switch
 2E: Version with 2 proximity switches

Special conditions:

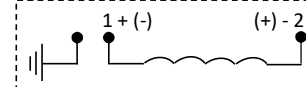
- **Dirt trap:** A dirt trap must be installed at the inlet of the valve, with a mesh size of < 1.0 mm ! From valve type size MK/FK25, the dirt trap must be accessible for cleaning or replacement without having to remove the valve.

- **Electrical connection:** The connection cable used must be suitable for be suitable for a temperature range from -15 °C to +125 °C !

Fluid symbol:



Electrical connection assignment:



Temperature ranges:

- The above-mentioned valves tested in accordance with DIN EN 16678:2024-02 can be operated in the temperature range from -15 °C to +80 °C

- The explosion-protected devices are, however, due to the temperature class T4 of Ex category 2 (Ex zone 1) are limited to a maximum temperature of +40 °C !

Flow media:

Gaseous fuels, class A, group 2