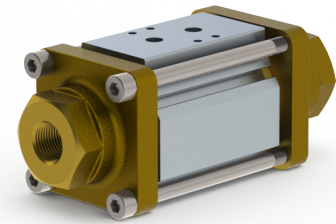


nominal specifications	CXF 2/2-way coaxial valve
2/2-way valve	externally controlled / air operated
pressure range	0-40 bar / 0-600 psi
connection	threads
function	NC - normally closed NO - normally open
design	pressure balanced, with spring return
body materials parts in contact with media	brass, stainless steel
seal materials seat / dynamic / static	PTFE / FPM / FPM customer to verify seal / seat compatibility with media
media	gaseous-liquid-gelatinous-highly viscous-contaminated
actuator connection	G 1/8 / FNPT 1/8 with NAMUR pilot valve interface



technical data	CXF 10	CXF 15	CXF 20	CXF 25
orifice mm	DN 10	DN 15	DN 20	DN 25
port connection threads	G 3/8 / FNPT 3/8	G 1/2 / FNPT 1/2	G 3/4 / FNPT 3/4	G 1 / FNPT 1
factor Kv A → B	2,2 m³/h	5,3 m³/h	9,4 m³/h	13,0 m³/h
media temperature	-20 °C bis +100 °C	-20 °C bis +100 °C	-20 °C bis +100 °C	-20 °C bis +100 °C
ambient temperature	-20 °C bis +60 °C	-20 °C bis +60 °C	-20 °C bis +60 °C	-20 °C bis +60 °C
pneumatic actuation	5/2-way pilot valve (optional)	5/2-way pilot valve (optional)	5/2-way pilot valve (optional)	5/2-way pilot valve (optional)
actuating pressure	4-8 bar / 60-120 psi	4-8 bar / 60-120 psi	4-8 bar / 60-120 psi	4-8 bar / 60-120 psi
actuation time opening	120 ms to 3000 ms	140 ms to 3000 ms	160 ms to 3000 ms	200 ms to 3000 ms
actuation time closing	200 ms to 3000 ms	240 ms to 3000 ms	240 ms to 3000 ms	280 ms to 3000 ms
vacuum leak rate	< 10 ⁻⁴ mbar•l•s ⁻¹	< 10 ⁻⁴ mbar•l•s ⁻¹	< 10 ⁻⁴ mbar•l•s ⁻¹	< 10 ⁻⁴ mbar•l•s ⁻¹
flow direction	A → B B → A	A → B B → A	A → B B → A	A → B B → A
length L1 / L2	145 mm / 50 mm	173 mm / 70 mm	193 mm / 80 mm	212 mm / 90 mm
length L3 / L4	- / -	- / -	- / -	- / -
weight without pilot valve	1,3 kg / 2,87 lb	2,5 kg / 5,51 lb	3,8 kg / 8,38 lb	5,1 kg / 11,24 lb

accessories optional	order-codes			
5/2-way pilot valve NAMUR DC 24 V	1 3 4 5 7 9	1 3 4 5 7 9	1 3 4 5 7 9	1 3 4 5 7 9
5/2-way pilot valve NAMUR AC 110 V	1 3 4 5 8 1	1 3 4 5 8 1	1 3 4 5 8 1	1 3 4 5 8 1
5/2-way pilot valve NAMUR AC 230 V	1 3 4 5 8 0	1 3 4 5 8 0	1 3 4 5 8 0	1 3 4 5 8 0
mounting brackets stainless steel	1 3 4 5 7 5	1 3 4 5 7 6	1 3 4 5 7 7	1 3 4 5 7 8
limit switch Reed AC / DC 10-30 V	1 3 4 5 7 4	1 3 4 5 7 4	1 3 4 5 7 4	1 3 4 5 7 4

drawings	circuit symbols	valve order-code
	<p>function: NC valve normally closed</p> <p>function: NO valve normally open</p>	<p>9 8 3</p> <p>NC = 5 NO = 6</p> <p>DN 10 G 3/8 = 1 DN 10 FNPT 3/8 = 5 DN 15 G 1/2 = 2 DN 15 FNPT 1/2 = 6 DN 20 G 3/4 = 3 DN 20 FNPT 3/4 = 7 DN 25 G 1 = 4 DN 25 FNPT 1 = 8</p> <p>brass = 1 stainless steel = 2</p>