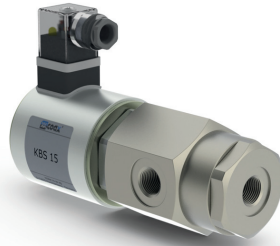
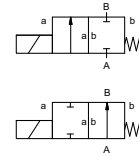



lateral valve

type **KBS 15**



2/2 way valve **direct acting**
pressure range PN 0-500 bar
orifice DN 1,5-3 mm
connection thread
function valve
 normally closed
 symbol **NC**
 valve
 normally open
 symbol **NO**



 Above stated body materials refer to the valve port connections that get in contact with the media only!

design direct acting, with spring return
body materials ① brass ②
 ③ brass, nickel plated ⑤
 ④ ⑥ stainless steel

valve seat synthetic resin on metal
seal materials NBR **FPM**

details needed

- orifice
- port
- function NC/NO
- operating pressure
- flow rate
- media
- media temperature
- ambient temperature
- nominal voltage
- switching cycles

general specifications


options


ports	KBS	threads G 3/8	special threads
function	NC		NO
pressure range	bar	250 400 500	100 300 500
	DN	3 2 1,5	3 2 1,5
Kv value	l/min	5,2 1,3 1,1	5,2 1,3 1,1
vacuum	leak rate	< 10 ⁻⁶ mbar·l·s ⁻¹	
pressure-vacuum	P ₁ ⇔ P ₂	upon request	
back pressure	P ₂ > P ₁	upon request	
media	gaseous - liquid		
abrasive media			
damping	opening		
	closing		
flow direction	A ⇔ B	as marked	bi-directional upon request
switching cycles	1/min	270	
switching time	ms	opening 60	
		closing 160	
media temperature	°C	DC: -20 to +100	
		AC: -20 to +100	
ambient temperature	°C	DC: -20 to +80	
		AC: -20 to +80	
limit switches			
manual override			
approvals	WAZ		
mounting	mounting holes		
weight	kg	4,2	
additional equipment	upon request		

electrical specifications

options

nominal voltage	U _n	DC 24 V	special voltage upon request
	U _n	AC 230 V 40-60 Hz	special voltage upon request
actuation	DC	direct-current magnet	
	AC	direct-current magnet with integrated rectifier	
insulating rating	H	180°C	
protection	IP65		
energized duty rating	ED	100% (upon request)	
connection		terminal box M16x1,5	plug acc. DIN EN 175301-803 form A, 4 positions x90° / wire diameter 6-8 mm
optional	M12x1	connector acc. DESINA	connector acc. VDMA
additional equipment	1-coil operation	DC 24 V 1,60 A	AC 230 V 40-60 Hz 0,15 A
	2-coil operation	DC 24 V 5,90 A / AC 230 V 0,76A	pick up power
		DC 24 V 1,58 A / AC 230 V 0,16A	holding power
explosion proof			
limit switches			

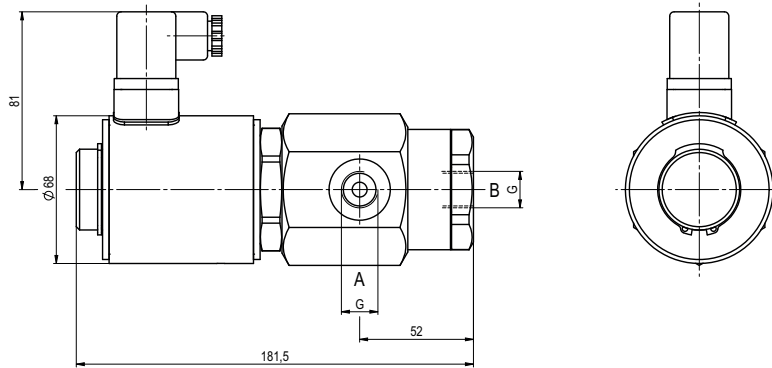
 The valves' technical design is based on media and application requirements. This can lead to deviations from the general specifications shown on the data sheet with regards to the design, sealing materials and characteristics.

 If order or application specifications are incomplete or imprecise there exists a risk of an incorrect technical design of the valve for the required application. As a consequence, the physical and / or chemical properties of the materials or seals used, may not be suitable for the intended application.

■ specifications not highlighted are standard
 ■ specifications highlighted in grey are optional

type **KBS 15**

function: **NC**
closed when not energized



type **KBS 15**

function: **NO**
open when not energized

